



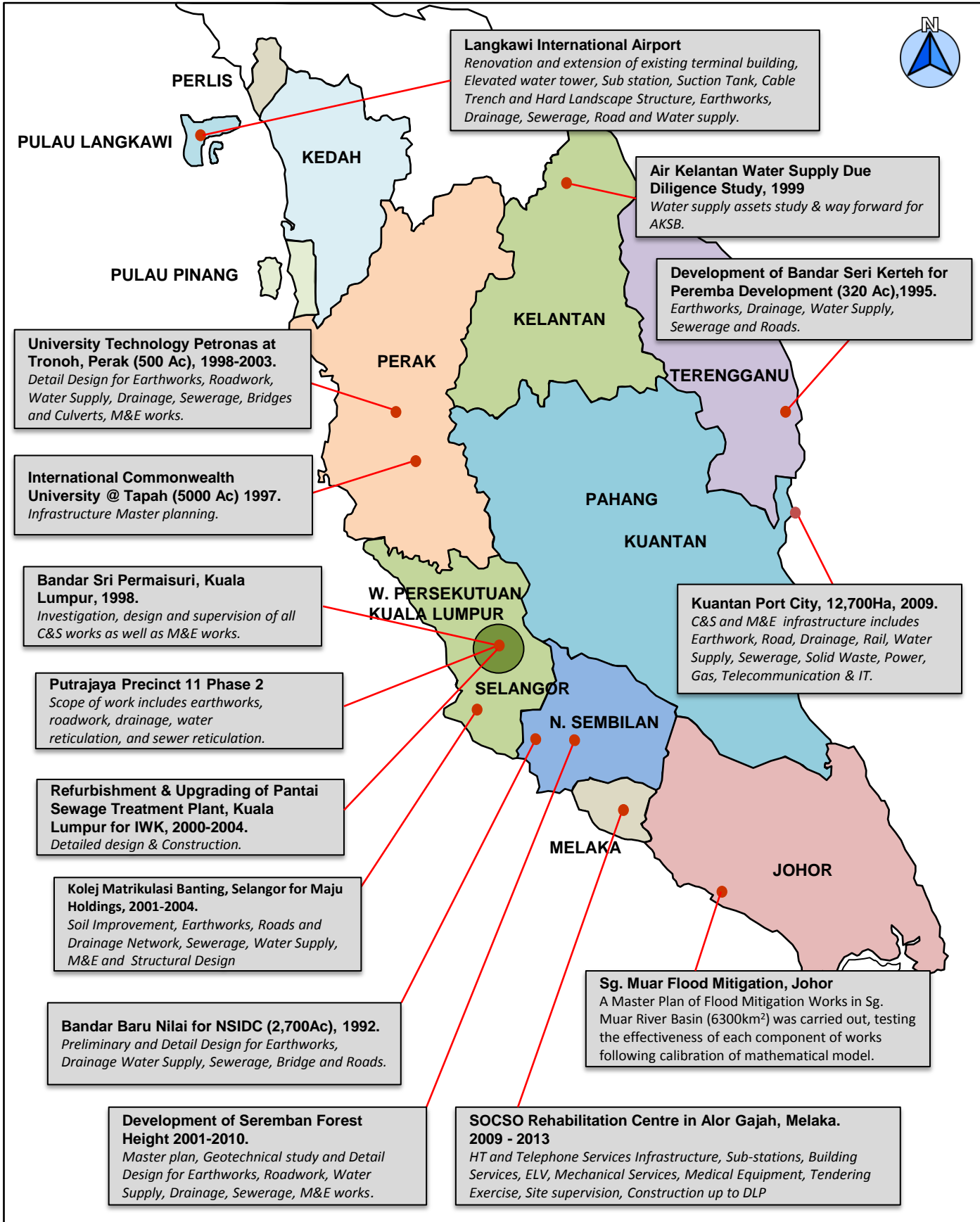
Infrastructure & Township



ENGINEERS

total engineering services

INFRASTRUCTURE & TOWNSHIP EXPERIENCE IN MALAYSIA



Mission Statement

HSS Group's vision is simple;

“To be recognised as Malaysia’s premier one stop one engineering service provider, as reflected in our continuous outstanding contribution to the development of major infrastructure; and maintain this position through excellent services and superior technical quality, innovation and performance”

This vision is realised through;

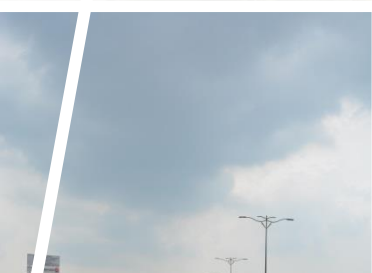
Personal involvement of the directors to provide strong leadership to ensure timely and speedy implementation of both corporate objectives & goals

Existing effective and efficient corporate structure to provide maximum operating efficiencies to the Group

The vast base of experience within the Group that helps to leverage its niche in the engineering arena

The availability of capital within the Group to provide adequate funding strength for Group operations

Continuous quality engineering services upgrading through constant re-engineering process and training while maintaining the existing standard of professionalism



Bandar Bukit Raja Development, Selangor



Corporate Information

HSS Engineers Berhad (HEB or the Company) is an investment holding company which was incorporated on 23 January 2015 under the Companies Act 1965 as a private limited company under the name of HSS Engineers Sdn. Bhd. before it converted into a public limited company. The Company assumed its present name on 31 March 2015. The Group operates from 3 main offices which are based in Kuala Lumpur and Penang in Malaysia as well as Chennai in India. HEB, had on 28 March 2018, completed the acquisition of SMHB Engineering Sdn Bhd (SMHB) which provides engineering services and project management consultancy for the water sector.

Its associate company, HSS Integrated Sdn Bhd (HSSI), is currently one of the leading ISO Certified (ISO 9001:2015, ISO 14001:2015 and OHSAS 18001:2007) engineering consultancy firms in Malaysia. With a proud history over the last 30 years, HSSI is a firm with shared values, an open culture, commitment to services & quality, provision of high standards of professionalism and business ethics, along with a leading edge approach to delivering a sustainable future.

Our expertise includes project management, master planning, preliminary and detailed engineering designs, construction supervision, contracts administration, feasibility studies for major infrastructure project in South East Asia, Middle East and North Africa (MENA) and South Asia. The Group's results are evident from the track records of vast experience and timely delivery of projects in addition to the established good working relationships with clients from both the public and private sectors.

As a total engineering solution Firm with a global total workforce of over 1000 staff of which more than half are engineers, HEB is able to draw on resources within and is well equipped to handle projects of varying magnitudes. HEB is confident that as a group, similar engineering consultancy services can be provided in other parts of the world mainly in the transportation and urban infrastructure development projects. The group is confident that with the experience and track record, it will be able to provide a high standard of engineering services to any client.



SOCSO Rehabilitation Centre, Melaka

Infrastructure & Township Capability

HSS is experienced in full spectrum of Infrastructure and Township Development works encompassing Master Planning, Detailed Design, Project Management, Pre & Post Construction, etc.

HSS involved in numerous projects throughout Malaysia and are familiar with the Local Authorities / Service Providers requirement, design procedures, prevailing design standards and code of practise. Our engineering consultancy expertise is proven through successful completion of various sizes of projects since our establishment;

Pre-development activities;

- Project initiation
- Survey & Site investigation
- Infrastructure Master Plan
- Development Order & Building Plan Approvals
- Feasibility Studies

Engineering Design & Construction of engineering disciplines;

- Geotechnical & Earthwork
- Road
- Drainage
- Water Supply
- Waste Water Engineering
- Power Distribution Infrastructure System
- Telecommunication Backbone Network
- District Cooling Distribution Pipeline Network
- Natural Gas/LPG Distribution Pipeline Network
- Fire Hydrant System
- Road Lighting System



Bandar Sri Permaisuri,



Infrastructure & Township Capability

Geotechnical & Earthwork

HSS is experienced in Geotechnical & Earthwork works encompassing Master Planning, Detailed Design, Project Management, Pre & Post Construction, etc. Area of our competencies (but not limited to) are Geotechnical Investigation & interpretation, Cut & Fill of Earthwork, Earth Retaining Structures and ancillary works.

HSS involved in numerous projects throughout Malaysia and are familiar with the Authority / Local Council design procedures, prevailing design standards and code of practise.

Specific capabilities are;

- Soil Investigation & Geotechnical Interpretation
- Soil Treatment / Improvement
- Terrain Mapping
- Land Reclamation works
- Coastal & inland Developments
- Piling work
- Earthwork platforms & Retaining Structures
- Tunnelling & Pipe jacking



Earth grading works, Techno[par]k Development, Dubai, UAE

Infrastructure & Township Capability

Roads

HSS is experienced in urban and rural roads encompassing Master Planning, Detailed Design, Project Management, Pre & Post Construction, etc. Area of our competencies (but not limited to) are Majlis / local, rural & urban roads, Highways & Bridges and ancillary works.

HSSI involved in numerous projects throughout Malaysia and are familiar with the Authority / Local Council design procedures, prevailing design standards and code of practise.

Specific capabilities related to township and land development are;

- Flexible & Rigid Pavements / Parking & Hardstands
- Taxiways & Aircraft Apron
- Interchange, By-pass & underpass
- Access roads
- Road furniture & signage
- Main Junctions (signalised / non-signalised)
- Industrial / Commercial / Residential roads' networks
- Main / Roadside drains and culvert crossings



Infrastructure & Township Capability

Drainage

HSS is experienced in urban and rural drainage encompassing Master Planning, Detailed Design, Project Management, Pre & Post Construction, etc. Area of our competencies (but not limited to) are Major & Minor drains and ancillary works.

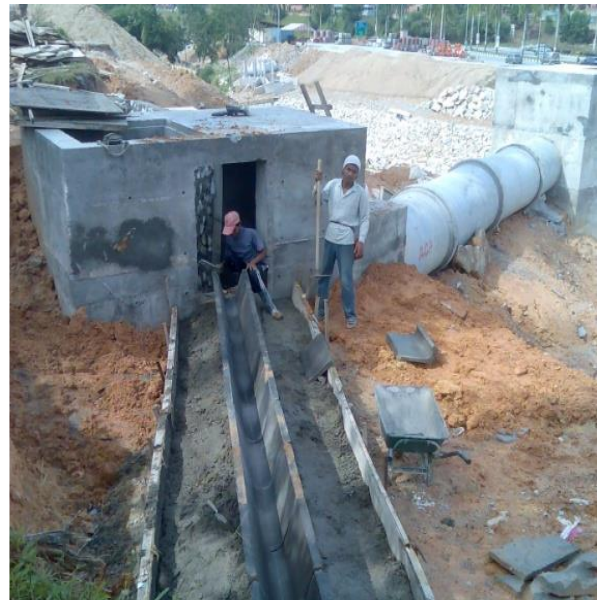
HSS involved in numerous projects throughout Malaysia and are familiar with the Authority / Local Council design procedures, prevailing design standards and code of practise. Conversant in Manual Saliran Mesra Alam (MSMA) requirement & compliance.

Specific capabilities related to township and land development are;

- Hydrological & hydraulics Analysis
- Erosion Sediment Control Plan (ESCP)
- Detention Ponds
- Rain Water Harvesting
- Minor & Major Drains
- Stream / River Diversion
- Discharge Outlet Control structures
- Grease / oil contaminated run-off water control



River improvement, Sg. Long Selangor



Infrastructure & Township Capability

Water Supply

HSS is experienced in Water Supply works encompassing Master Planning, Detailed Design, Project Management, Pre & Post Construction, etc. Area of our competencies (but not limited to) are Water Treatment Plants, Pipelines, Suction Tanks & Reservoirs, Pumping and other related water supply ancillary works.

HSS involved in numerous projects throughout Malaysia and are familiar with the State Water Service Providers and Suruhanjaya Perkhidmatan Air Negara (SPAN)'s design procedures, prevailing design standards and code of practise.

Specific capabilities are;

- Rural & Urban Water Supply
- Inter-reservoirs water transfer
- Terminal & Balancing Ground / Elevated Water Storage
- Water pumping system
- Water Reticulation
- Uninterrupted Water Supply
- Non-Revenue-Water
- Pipes relocation



Water Storage & Pumping Facility, Matriculation College, Selangor

Infrastructure & Township Capability

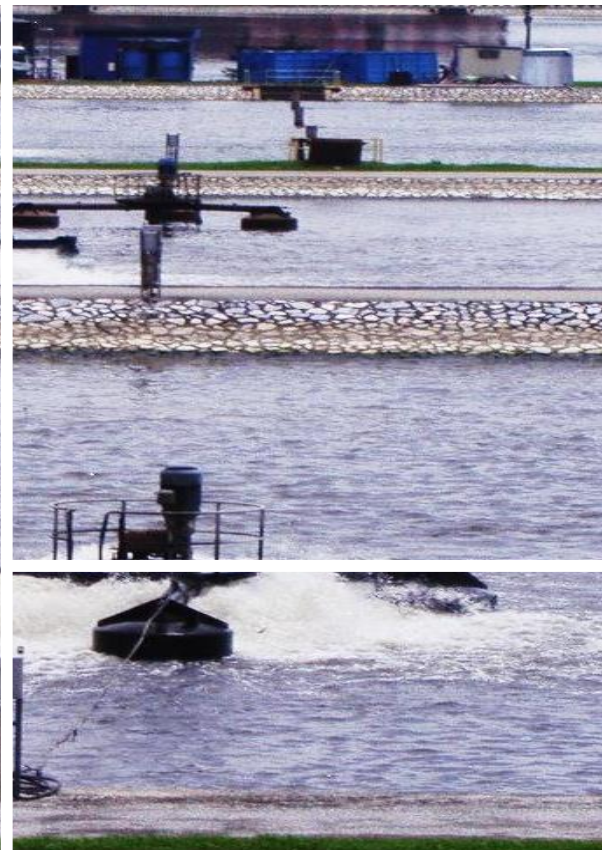
Waste Water Engineering

HSS has been deeply involved in this industry since the privatisation concessional of sewerage system to Indah Water Konsortium Sdn.Bhd in 1993. On December 1993, the Government of Malaysia has granted Indah Water Konsortium (IWK) a 28 years concession to provide sewerage service in local authority operational area.

The need for an efficient and effective sewerage system has been acknowledged and privatisation was seen as a suitable solution to the problem of ensuring the wastewater receives proper treatment before its effluent is discharged into the waterways.

Specific capabilities are;

- Sewer reticulation network
- Lifting Station
- Sewage Treatment Plant
- Sludge & Solid Waste Handling
- Sewer pipes relocation





Services

Project Identification and Assessment of Needs
Due Diligence studies
Land and Geotechnical Survey
Technical and Engineering Feasibility Assessment
Infrastructure Master Planning
Environmental Impact Assessment
Economic and Financial Appraisals
Preliminary and Detailed Engineering Designs
Bills of Quantities, Specification and Procurement
Computer simulation and Modeling
Contract Documentation and Administration
Project Scheduling
Material Testing and Inspection
Quality Control and Construction Supervision
Equipment Inspection and Commissioning
Cost and Budget Control
Total Project Management
Authorities & Approvals



Infrastructure & Township Experience

The following generally highlights HSS's experience, knowledge and deep involvement on some prominent large scale infrastructure projects both in the Pre and Post Contract Stage. Some of the projects are as listed below.

Development of Seremban Forest Height, Seremban, Negeri Sembilan for Tropical Terrain, 2001-2010

Description : A large housing scheme.

Services : Master plan, Geotechnical study and Detail Design for Earthworks, Roadwork, Water Supply, Drainage, Sewerage, Mechanical & Electrical works.

Project Value : RM 65 mil (USD 20 mil)

Kolej Matrikulasi Banting, Selangor for Maju Holdings, 2001-2004

Description : The 90 acre site comprises academic, administration, residential, recreational and associated facilities. Geotechnical Studies.

Services : Soil Improvement, Earthworks, Roads and Drainage Network, Sewerage, Water Supply, M & E and Structural Design.

Project Value : RM 200 mil (USD 61 mil)

Kuantan Port City, Kuantan, Pahang, 12,700Ha, 2009

Description : Development of ECER Infrastructure Masterplan. The objective is to accelerate the growth of the ECER in a viable, equitable & sustainable manner.

Services : C&S and M&E infrastructure includes Earthwork, road, Drainage, Rail, Water Supply, Sewerage, Solid Waste, Power, Gas, Telecommunication & IT.

Project Value : RM 65 bil (USD 20 mil)

Bandar Sri Permaisuri, Kuala Lumpur, 1998

Description : HSS provided input to the Masterplan and Infrastructure development of Bandar Sri Permaisuri.

Services : This included investigation, design and supervision of all civil & structural works as well as Mechanical & Electrical works.

Project Value : RM 57 mil (USD 17 mil)



Junction upgrading, Sungai Buloh, Selangor



Bandar Sri Permaisuri, Kuala Lumpur



Infrastructure & Township Experience

Replacement of AC Pipes for Districts of Kuala Langat, Kuala Selangor and Sepang to reduce NRW for SYABAS, 2005

Description : To provided engineering consultancy services for pipe replacement and other associated works in the Districts of Kuala Langat, Kuala Selangor and Sepang, Selangor.

Services : NRW study and detailed design, tender & construction of pipes network.

Project Value : *RM 60 mil (USD 18 mil)*

Kuala Lumpur International Airport (KLIA) (20,000 ha) for KLIA Berhad

Description : The Airport capable of handling 25 million passengers per annum which would consists of two runways, parallel taxiways, aprons, a main passenger terminal, a satellite terminal building and essential landside and airside support facilities.

Services : Preliminary Design for External Infrastructure, Detail Design for Earthworks and Drainage.

Project Value : *RM 9 bil (USD 3 bil)*

University Technology Petronas at Tronoh, Perak (500 Ac), 1998-2003

Description : The first university using the concept of University in the Forest.

Services : Detail Design for Earthworks, Roadwork, Water Supply, Drainage, Sewerage, Bridges and Culverts, Mechanical & Electrical works related to infrastructure development.

Project Value : *RM 1 bil (USD 304 mil)*

Bandar Baru Nilai for NSIDC (2,700 Ac), 1992

Description : HSSI was appointed to provide engineering consultancy services for Bandar Baru Nilai (BBN). The project covered a total area of approximately 6230 acres and was designed to serve a major Commercial Corporate Centre for the northern part of Negeri Sembilan.

Services : Preliminary and Detail Design for Earthworks, Drainage, Water Supply, Sewerage, Bridge and Roads.

Project Value : *RM 1.2 bil (USD 365 mil)*

Guthrie Aerospace Park at Bukit Jelutong Shah Alam for Guthrie Properties (250 Ac)

Description : Guthrie Aerospace Park (GAP) sits on a 140 acres land was divided into two (2) type of development i.e. Airside and Landside. GAP was designed to cater to the aerospace industry and to encourage investment from foreign market.

Services : Earthworks, Drainage, Water Supply, Sewerage and Roads including taxiway, hangers and apron.

Project Value : *RM 40 mil (USD 12 mil)*



Infrastructure & Township Experience



Development of Bandar Seri Kerteh for Peremba Development (320 Ac), 1995

Description : The Project is an extension of the existing development which consists of mixed development such as shop-offices, residential, shopping complexes, hotels and apartments. HSSI was appointed as the civil, structural, mechanical and electrical consultants for the Infrastructure works for this project.

Services : Earthworks, Drainage, Water Supply, Sewerage and Roads.

Project Value : RM 200 mil (USD 60 mil)

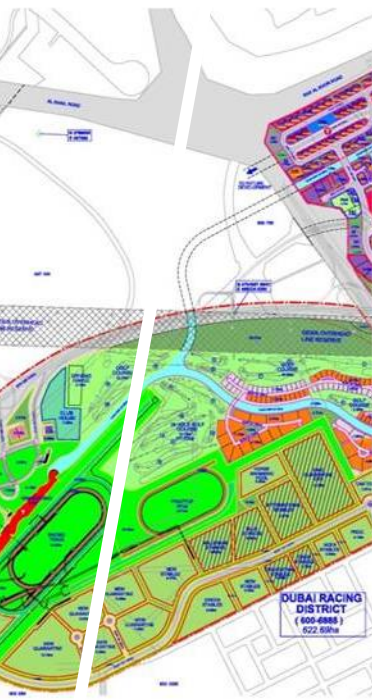


Best World Technopark at Cavite Philippines (360 Ac) for Best World International Land Inc

Description : The Project comprise of mix-development of small, medium industries, housing and commercial. HSSI in association with EDCOP was responsible to provide consultancy services for infrastructure works throughout the duration of the project.

Services : Earthworks, Drainage, Water Supply, Sewerage, Bridge and Roads.

Project Value : RM 250 mil (USD 76 mil)



Refurbishment & Upgrading of Pantai Sewage Treatment Plant, Kuala Lumpur for IWK, 2000-2004

Description : The Pantai STW constructed between 1952 and 1980, the plant was able to treat an inflow equivalent to 440,000 P.E. while the actual flow currently is 460,000 P.E. There was a need to refurbish, upgrade and dislodge the aerated lagoon to meet current and future demand.

Services : Detailed design & construction.

Project Value : RM 36 mil (USD 11 mil)

Technopark Development (2,700 Ha) for Jabel ali Free Zone Authority (JAFZA) in Dubai, UAE, 2007 – ongoing

Description : Techo Park Development comprises of approximately 1,760 hectares, which is intended to be developed as a “high tech hub” with clusters of similar technological industries.

Services : Infrastructure Master planning and detail design.

Project Value : AED 1.5 bil (USD 408 mil)



Water Pumping Facility, Matriculation College, Selangor



Infrastructure & Township Experience

Madinat Al Arab Development, Dubai, UAE, 2006

Description : Madinat Al-Arab, “City of Million” is the extension of Palm Jebel Ali (2nd Palm) and it covers an area of approximately 30,000 acres.

Services : Infrastructure Master planning.

Project Value : AED 36 mil (USD 10 mil)

Nad-al-Sheba Racing Club in Dubai, UAE (270Ha), 2006-2007

Description : Nad Al Sheba Development with a total of 450 hectares and an additional 150 hectares of a supporting Mixed Use District is intended to showcase Dubai’s high profile Horse Racing.

Services : Infrastructure master planning and detail design for Mixed Used development.

Project Value : AED 2 bil (USD 544 mil)

Bandar Bukit Raja, Klang (2658.70 Ac) for Sime UEP, 2000 – Ongoing

Description : With a tagline “DOORWAY TO A NEW WORLD IN KLANG” the mega self-contained township covering an area of 1,762 acres (Stage 1), is a freehold township comprising of residential, commercial and industrial units.

HSSI was appointed to provide Engineering Consultancy Services for the infrastructure development including soil investigation, design and supervision of all civil works.

Services : Infrastructure Master planning and detail design.

Project Value : RM 345 mil (USD 105 mil)

Langkawi International Airport

Description : The existing Terminal Building was extended on both sides. HSSI was responsible to coordinate the project and safeguard against defects and deficiencies. As part of the company’s quality management policy, HSSI conducted inspection check testing of all materials and workmanship to ensure compliance with specifications and plans.

Services : Cable Trench and Hard Landscape Structure, Earthworks, Drainage, Sewerage and Road and Water supply.

Project Value : RM 68 mil (USD 20 mil)





Infrastructure & Township Experience



International Commonwealth University @ Tapah (5,000 Ac)

Description : The University and its immediate related ancillary functions covered an area of 900 acres. The university would be a centre of excellence in scientific, technological and managerial education through its academic links with Cambridge and with other world class centres in their respective fields of excellence.

Services : Infrastructure Master planning.

Project Value : *RM 600 mil (USD 182 mil)*



Puchong Foundry @ Dengkil (300 Ac)

Description : Puchong Foundry constructed between 1994 to 2000. Major Earthwork for the Foundry involving Earthworks, Drainage, Water Supply and Sewerage.

Services : Infrastructure Master planning and detail Design.

Project Value : *RM 51 mil (USD 15 mil)*



Putrajaya Precinct 11 Phase 2

Description : This Precinct 11 development within Putrajaya which is under taken by Putrajaya Holdings Sdn Bhd is located to the north-west of Putrajaya. The proposed Phase 2 development is part of the overall development of Precinct 11. This phase of the development is divided into zones and it is approximately 452 acres (183 ha), whereas the total Precinct 11 development is about 1,049 acres (424.2 ha). This development is developed in stages and comprised mostly of residential, including Bungalows, Semi - Detached houses, Link Houses, and Apartments.

Services : Scope of work includes earthworks, roadwork, drainage, water reticulation, and sewer reticulation.

Project Value : *RM 106 mil (USD 33 mil)*



Infrastructure & Township Experience – Road

PROJECT DESCRIPTION	CLIENT	ROAD NETWORKS MASTERPLAN	MAJOR RRAD	MINOR ROAD	SERVICEROAD	RECREATIONAL LAYBY	JUNCTION UPGRADE	SIGNALIZED JUNCTION	UNSIGNALIZED JUNCTION	HEAVY DUTY PAVEMENT	LIGHT DUTY PAVEMENT	PEDESTRIAN PLANNING (SAFE CITY)
Bandar Bukit Rajah Township, Klang	SIME UEP	✓	✓	✓	✓	✓	✓	✓	✓	✓	✓	✓
Bukit Bintang City Centre Masterplan & Blue print	APUDG/UDA	✓			✓		✓	✓	✓		✓	
SOCSCO Rehabilitation Centre, Melaka	SOCSCO	✓	✓	✓	✓		✓		✓		✓	✓
Matriculation College, Banting Selangor	Maju Holdings	✓	✓	✓			✓		✓		✓	✓
Expansion of West Port (CT3-CT9) , Port Klang, Malaysia. (2004-2006)	Westports	✓	✓	✓	✓		✓		✓	✓		
Manjung Coal Fire Power Plant Unit 4	Mudajaya	✓		✓	✓				✓		✓	
Masterplan for Danga Height, Johor Bahru	Danga Bay	✓	✓	✓	✓	✓	✓		✓		✓	
FINAS Administrative Building, Sg.Buluh	FINAS	✓		✓	✓		✓		✓		✓	✓
Sembawang Port, Johor		✓	✓	✓			✓		✓	✓	✓	
Panglima Power Plant Melaka	SIEMEN		✓	✓			✓		✓		✓	
Honda Showroom, Sg.Buluh	Hock Lee		✓	✓			✓	✓			✓	
Putrajaya Township Precint 11, Putrajaya	Peremba	✓	✓	✓		✓		✓	✓		✓	
Sg.Muar Flood Mitigation, Johor	JPS	✓	✓	✓			✓	✓	✓		✓	
Kuantan Port City Masterplan (2008-2040)	PAG	✓	✓	✓			✓	✓	✓		✓	
Masterplan for Madinat Al Arab, Jebel Ali, Dubai.	Nakheel	✓	✓	✓				✓	✓		✓	
Masterplan for Nad Al Sheba, Dubai.	TAK	✓	✓	✓				✓	✓		✓	
Technopark Development, Dubai	Technopark Management	✓	✓	✓				✓	✓		✓	
Lumut Port Industrial Park, Setiawan, Perak	LMT Sdn.Bhd	✓	✓	✓			✓		✓		✓	
Bandar Sri Permaisuri, Kuala Lumpur	PPC-Glomac	✓	✓	✓			✓	✓	✓		✓	
Universiti Teknologi Petronas	ITP	✓	✓	✓			✓		✓		✓	

Infrastructure & Township Experience – Road

PROJECT DESCRIPTION	CLIENT	ROAD NETWORKS MASTERPLAN	MAJOR RRAD	MINOR ROAD	SERVICEROAD	RECREATIONAL LAYBY	JUNCTION UPGRADE	SIGNALIZED JUNCTION	UNSIGNALIZED JUNCTION	HEAVY DUTY PAVEMENT	LIGHT DUTY PAVEMENT	PEDESTRIAN PLANNING (SAFE CITY)
Forest Height Development , Seremban	SUNRISE	✓	✓	✓			✓	✓	✓		✓	
Bandar Baru Kertih, Terengganu	PEREMBA	✓	✓	✓			✓		✓		✓	
Iron Foundry for Permodalan Negeri Selangor Berhad (PNSB), Dengkil, Selangor D.E.	PNSB		✓	✓			✓		✓		✓	
Master Plan for Gebeng Industrial Park, Kuantan for UPEN State of Pahang	UPEN Pahang	✓	✓	✓					✓		✓	



Infrastructure & Township Experience – Drainage

PROJECT DESCRIPTION	CLIENT	EROSION AND SEDIMENT CONTROL	SURFACE DRAIN/URBAN DRAINAGE	GPT/TRASH SCREEN	OSD/DETENTION POND/OUTLET CONTROL	RAINWATER HARVESTING	DRAINAGE CULVERT	RIVER BRIDGE	REALIGNMENT/ STREAM DIVERSION
Manjung Coal Unit 4, 1 x 1000 MegaWatt – Power Plant Malaysia	TNB	√	√	√			√		
Klang Valley Mass Rapid Transit (KVMRT) – Sg. Buloh to Kajang	MRT Corporation	√	√	√	√	√	√	√	√
Proposed Maju Expressway Extension to KLIA	Maju Holdings	√	√	√	√		√	√	√
Feasibility Study for the Proposed East Coast Rail Route	ECER	√	√				√	√	√
Masterplan Study on Kuantan Port City, Kuantan, Pahang	PAG	√	√	√	√		√	√	√
Proposed Development of New Low Cost Carrier Terminal (LCCT) and Associated Works at Kuala Lumpur International Airport (KLIA)	Malaysia Airport Berhad	√	√	√	√		√	√	√
Development of Bandar Bukit Raja (Stage 1), Mukim Kapar, Daerah Klang, Selangor Darul Ehsan	Sime Darby Development	√	√	√	√		√		√
Electrified Double Track Project (Northern Line: Ipoh to Padang Besar under GAMUDA)	Gamuda	√	√	√			√	√	√
Electrified Double Track Project (Southern Line): Seremban to Gemas under IRCON)	IRCON	√	√	√			√	√	√
Extension of Light Rail Train(LRT Ampang Lines)	Prasarana	√	√	√	√	√	√	√	√
Proposed Extension of Existing Penang Bridge, Penang	Penang Bridge Sdn Bhd	√	√				√		
Ipoh-Lumut Link Road and Diamond Interchange, Perak Darul Ridzuan	Projek Lebuhraya Utara Selatan (PLUS)	√	√	√	√		√	√	√
Privatisation of Kajang Seremban Highway (LEKAS)	LEKAS	√	√	√	√		√	√	√
Proposed Masterplan Study for Madinat Al-Arab, Dubai UAE	Nakheel		√	√	√		√	√	
Proposed Mixed Use Development on Plot 611-122, Bukadra, Dubai UAE	Nakheel		√	√	√		√	√	
Proposed Development and Construction of the Nad Al Sheba Course on Parcel 600-6888, Nad Al Sheba, Dubai UEA	TAK		√	√	√		√	√	
Detailed Design of Sungai Muar Flood Mitigation Works (FASA 1) Johor	JPS	√	√	√	√		√	√	√
East Coast Expressway ECE II (Bukit Besi to Bukit Payung – Package 10D)	MTD	√		√	√		√	√	√
Proposed Construction of Sidel Factory at Shah Alam Selangor	Sidel Distribution (M) Sdn Bhd	√	√	√	√		√		
Drainage Master Plan Study for Simpang Renggam Town, Johor Darul Takzim	JPS	√	√	√	√		√	√	√

Infrastructure & Township Experience – Drainage

PROJECT DESCRIPTION	CLIENT	EROSION AND SEDIMENT CONTROL	SURFACE DRAIN/URBAN DRAINAGE	GPT/TRASH SCREEN	OSD/DETENTION POND/OUTLET CONTROL	RAINWATER HARVESTING	DRAINAGE CULVERT	RIVER BRIDGE	REALIGNMENT/ STREAM DIVERSION
Proposed Design, Construction and Commissioning of Solid Waste Thermal Treat Plant at Beroga, Mukim Semenyih, Daerah Hulu Langat, Selangor Darul Ehsan	Kementerian Perumahan dan Kerajaan Tempatan	✓	✓	✓	✓		✓	✓	
Cadangan Pembangunan bercampur di atas Lot PT21008, Mukim Ampangan, Seremban, Negeri Sembilan	Sunrise MCL Berhad	✓	✓	✓	✓		✓		
Bukit Bintang City Centre Masterplan & Blue Print	APUDG/UDA	✓	✓	✓	✓	✓	✓		
SOCISO Rehabilitation Centre, Melaka	SOCISO	✓	✓	✓	✓		✓		
Matriculation College, Banting Selangor	Maju Holdings	✓	✓	✓	✓		✓		
Technopark Development, Dubai	Technopark Management		✓	✓	✓		✓		
Expansion of West Port (CT3-CT9) vessels water supply system, Port Klang, Malaysia.	Westports	✓	✓	✓			✓		
Bandar Sri Permaisuri, Kuala Lumpur	PPC-Glomac	✓	✓	✓	✓	✓	✓		
Putrajaya Main Infra Precint 11	PJC/PJH	✓	✓	✓	✓		✓		



Infrastructure & Township Experience – Water Supply

PROJECT DESCRIPTION	CLIENT	WATER SUPPLY MASTERPLAN	ASSET STUDY	INTER-RESERVOIR PIPELINE	TRANSMISSION PIPELINE	WATER TREATMENT PLANT	RETICULATION PIPELINE	SUCTION TANK	RESERVOIR	PUMPING SYSTEM & SURGE ANALYSIS	PLUMBING
Bukit Bintang City Centre Masterplan & Blue print (2.3 Mgd)	APUDG/UDA	✓			✓		✓	✓	✓	✓	
Kuantan Port City Masterplan (2008-2040), 114 Mgd	PAG	✓	✓	✓	✓	✓	✓	✓	✓	✓	
Pipes Replacement Work for Districts of Kuala Selangor, Kuala Langat And Sepang	SYABAS/KTAK		✓		✓		✓				
Re-development of Lembah Beringin, Selangor	Indofocus	✓	✓	✓	✓	✓	✓	✓	✓	✓	
SOCSO Rehabilitation Centre, Melaka	SOCSO				✓		✓	✓	✓	✓	✓
Matriculation College, Banting Selangor	Maju Holdings				✓		✓	✓	✓	✓	✓
Air Kelantan Water Supply Due Diligence Study for the State of Kelantan for AKSB. (1999)	AKSB		✓								
Masterplan for Madinat Al Arab, Jebel Ali, Dubai. Demand 250 Mgd (2006)	Nakheel	✓			✓		✓	✓	✓	✓	
Masterplan for Nad Al Sheba, Dubai. Demand 5 Mgd. (2006)	TAK	✓			✓		✓	✓	✓	✓	
Al-Abdally Irrigation Farm, Kuwait	Ministry of Irrigation, Kuwait	✓			✓		✓	✓	✓	✓	
Technopark Development, Dubai	Technopark Management	✓		✓	✓		✓	✓	✓	✓	
Selangor Masterplan Study (Water Supply) for the State of Selangor. (2001)	MAG/JPBD	✓	✓	✓		✓			✓		
Port Dickson Local Plan Study, N.Sembilan	JPBD Selatan	✓		✓					✓		
Lumut Port Industrial Park, Setiawan, Perak (1,000Ac)	LMT Sdn.Bhd		✓	✓	✓		✓				
Temerluh, Maran, Bera and Jerantut Structure Plan Study	Rekarancang Sdn.Bhd/ JPBD	✓	✓	✓	✓	✓			✓		
Kang keng International Airport, Cambodia	Ariston	✓			✓	✓	✓	✓	✓	✓	
Expansion of West Port (CT3-CT9) vessels water supply system, Port Klang, Malaysia. (2004-2006)	Westports	✓			✓		✓	✓	✓	✓	
Bandar Bukit Rajah water supply system, Klang, demand 12 Mg. (3,000Ac)	SIME UEP	✓		✓	✓		✓	✓	✓		
Bandar Sri Permaisuri, Kuala Lumpur water supply system, demand 4 Mg.	PPC-Glomac	✓			✓		✓		✓		
Universiti Teknologi Petronas water supply system, demand 2 Mg.	ITP	✓		✓	✓		✓		✓		

Infrastructure & Township Experience – Water Supply

PROJECT DESCRIPTION	CLIENT	WATER SUPPLY MASTERPLAN	ASSET STUDY	INTER-RESERVOIR PIPELINE	TRANSMISSION PIPELINE	WATER TREATMENT PLANT	RETICULATION PIPELINE	SUCTION TANK	RESERVOIR	PUMPING SYSTEM & SURGE ANALYSIS	PLUMBING
Forest Height Development water supply system, Seremban, demand 2 Mg.	SUNRISE	✓		✓	✓		✓	✓	✓	✓	
Langkawi Airport water supply system, demand 2 Mg.	AJM				✓		✓	✓	✓	✓	✓
Bandar Baru Kertih, Terengganu water supply system	PEREMBA	✓			✓		✓	✓	✓	✓	
Overview of Water Supply Demand Sudy for Westport, Klang, Selangor D.E. for Klang Multi Terminal Sdn. Bhd. (1998)	Westports	✓	✓						✓		
Iron Foundry for Permodalan Negeri Selangor Berhad (PNSB), Dengkil, Selangor D.E. (200 Ac). 1994-2000, RM51.0 Mil	PNSB				✓		✓	✓	✓		
Master Plan for Gebeng Industrial Park, Kuantan for UPEN State of Pahang	UPEN Pahang	✓		✓	✓		✓	✓	✓	✓	



Infrastructure & Township Experience – Sewerage

PROJECT DESCRIPTION	CLIENT	SEWERAGE MASTERPLAN / PLANNING	SEWERAGE CATCHMENT STUDY	RETICULATION PIPELINE	LIFTING STATION	SEWERAGE TREATMENT PLANT	PUMPING SYSTEM & SURGE ANALYSIS
Bukit Bintang City Centre Masterplan & Blue print - 28,000 PE	APUDG/UDA	√					
Kuantan Port City Masterplan (2008-2040)- 170,000PE	PAG	√	√				
Bandar Baru Nilai, N Sembilan	Peladang Kimia	√		√		√	
Re-development of Lembah Beringin, Selangor	Indofocus	√	√				
SOCISO Rehabilitation Centre, Melaka - 1,400PE	SOCISO	√		√		√	
Matriculation College, Banting Selangor, 1,100PE	Maju Holdings	√		√		√	
Kuala Lumpur Sentral Station -28,000PE	MRCB	√					
Masterplan for Madinat Al Arab, Jebel Ali, Dubai. – 120,000PE	TAK	√		√	√		√
Nad Al Sheba Mixed development and race Course, Dubai.- 15,000PE	TAK	√		√	√		√
Al-Abdally Irrigation Farm, Kuwait	Ministry of Irrigation, Kuwait	√					
Technopark Development, Dubai- 280,000PE	Technopark Management	√		√	√		√
Selangor Masterplan Study for the State of Selangor. (2001)	MAG/JPBD	√	√				
Port Dickson Local Plan Study, N.Sembilan	JPBD Selatan	√					
Temerloh, Maran, Bera and Jerantut Structure Plan Study	Rekarancang Sdn.Bhd/ JPBD	√	√				
Kang keng International Airport, Cambodia, 140 PE	Ariston	√		√		√	
Expansion of West Port (CT3-CT9) , Port Klang, Malaysia. (2004-2006)	Westports	√					
Bandar Bukit Rajah Stage 1 ,2 and 3 (3000 Acres), Klang- 500,000PE	SIME UEP	√	√				
Bandar Bukit Rajah Stage 1 (1700 Acres), Klang- 100,000PE	SIME UEP	√		√	√	√	√
IKM Rembau Negeri Sembilan	MARA	√		√		√	
Bandar Sri Permaisuri, Kuala Lumpur water -40,000PE	PPC-Glomac	√		√			

Infrastructure & Township Experience – Sewerage

PROJECT DESCRIPTION	CLIENT	SEWERAGE MASTERPLAN / PLANNING	SEWERAGE CATCHMENT STUDY	RETICULATION PIPELINE	LIFTING STATION	SEWERAGE TREATMENT PLANT	PUMPING SYSTEM & SURGE ANALYSIS
Universiti Teknologi Petronas - 3,400PE.	ITP	✓		✓		✓	
Forest Height Development Seremban,- 35,000PE	SUNRISE	✓		✓	✓		✓
Langkawi International Airport ,-1,400PE	AJM / MAB	✓		✓		✓	
Bandar Baru Kertih, Terengganu -13,000PE	PEREMBA	✓		✓	✓	✓	✓
Bernam Valley Structure Plan	JPBD	✓	✓				
Kajang Local Plan Study	JPBD	✓	✓				
Damansara Sewerage Catchment Study	IWK		✓				
Privatisation on Nation Sewerage System	IWK	✓	✓				
Hospital Selayang, Selangor - 4,400PE	Obayashi Corporation	✓		✓		✓	
Proposed Refurbishment of Pantai STW, Pantai , Kuala Lumpur - 475,000PE	IWK					✓	
Temerloh, Maran,Bera and Jerantut Structure Plan	JPBD	✓	✓				
Proposed Desluding of Pantai STW, Pantai , Kuala Lumpur-475,000PE	IWK					✓	
Master Plan for Gebeng Industrial Park, Kuantan for UPEN State of Pahang	UPEN Pahang	✓					
Putrajaya Precint 11- Phase 2 (75,000PE)	PJH	✓		✓			





ENGINEERS

HSS ENGINEERS BERHAD

HEB Group comprises the following companies:

HSS Engineers Berhad (1128564-U)

HSS Engineering Sdn. Bhd. (450753-X)

SMHB Engineering Sdn Bhd (167729-A)

BIM Global Ventures Sdn. Bhd. (1008362-V)

HSS BIM Solutions Pvt. Ltd. (incorporated in India)(U74900TN2012PTC086741)

SMHB Environmental Sdn. Bhd. (258815-X)

Our associated companies held through HSS Engineering Sdn Bhd are as follows:

HSS Integrated Sdn. Bhd. (173262-T)

HSS Mekanikal & Elektrikal Sdn. Bhd. (228667-K)

The associated company held through SMHB Engineering Sdn Bhd is as follows:

SMHB Sdn. Bhd. (63281-X)

HSS Engineers Berhad

B1 (1-4) Block B Plaza Dwitasik

No 21, Jalan 5/106, Bandar Sri Permaisuri,

56100 Kuala Lumpur.. Malaysia

Tel : 603-91730355 Fax : 603-91730939

E-mail : heb@hss.com.my Web Site : www.hssgroup.com.my.



ENGINEERS

Wisma HSS Integrated
B1 (1-4) Block B Plaza Dwitasik
No 21, Jalan 5/106, Bandar Sri Permaisuri,
56100 Kuala Lumpur. Malaysia
Tel: 603-91730355 Fax: 603-91730939
E-mai: heb@hss.com.my Website: www.hssgroup.com.my