



# **CORPORATE PROFILE & CAPABILITY STATEMENT**

## THE GROUP

- Introduction
- Mission Statement

## ENGINEERING ACTIVITIES

- Services
- Scope
- Major Clients
  - Private Companies
  - Government Authority
  - Overseas
- Foreign Association



## EXPERIENCE

- Project Data Sheet
  - Local Projects
    - Transportation
    - Structural
    - Others
  - International Projects
    - Transportation
    - Structural
    - Others
- Matrix



the group

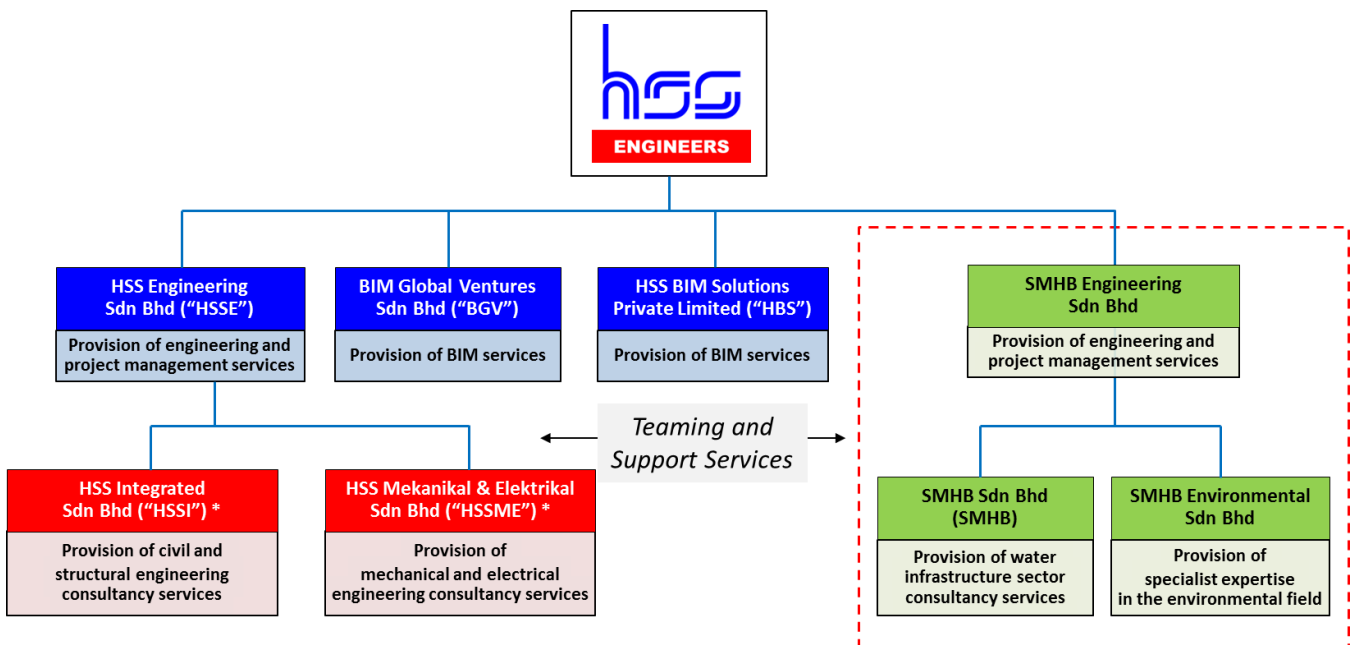
HSS ENGINEERS BERHAD



# introduction

The HEB Group of Companies was formed by a few enthusiastic and ambitious engineers. A solid foundation has since been laid for HSS to become one of the country's largest Bumiputra engineering providers. To date, the HEB Group provides a full range of engineering services for a wide variety of projects including feasibility studies, preliminary and detailed engineering design, project management, construction supervision and construction management.

The components of the HEB Group are as follows:



\* **HSSI** and **HSSME** are registered under the Registration of Engineers Act (1967), and have an exclusive Teaming and Support Services agreement with HSSE to exclusively execute and complete the contract



**"one stop one window engineering provider"**


*from concept to commissioning ...*

# quality assurance

*"To execute consultancy services in a manner which demonstrates integrity, competency and reliability &*

*To provide effective solutions to the client's brief which will meet regulatory requirements, operate reliably and are readily maintainable"*



 SIRIM	<b>HSSI</b>	<ul style="list-style-type: none"> <li>• MS ISO 9001 : 2015</li> <li>• ISO 14001 : 2015</li> <li>• OHSAS 18001 : 2007</li> </ul>	<ul style="list-style-type: none"> <li>• 2018</li> <li>• 2018</li> <li>• 2014</li> </ul>
	<b>HSSM&amp;E</b>	<ul style="list-style-type: none"> <li>• MS ISO 9001 : 2015</li> <li>• ISO 14001 : 2015</li> <li>• OHSAS 18001 : 2007</li> </ul>	<ul style="list-style-type: none"> <li>• 2018</li> <li>• 2018</li> <li>• 2014</li> </ul>
	<b>HSSE</b>	<ul style="list-style-type: none"> <li>• MS ISO 9001 : 2015</li> <li>• ISO 14001 : 2015</li> <li>• OHSAS 18001 : 2007</li> </ul>	<ul style="list-style-type: none"> <li>• 2018</li> <li>• 2018</li> <li>• 2015</li> </ul>

***The first engineering consultant to be ISO certified***



*from concept to commissioning ...*



The following are examples of some projects successfully undertaken by HEB Group of Companies:

**HIGHWAY/ROADS**

*Dedicated Highway (KL-Putrajaya-KLIA), Malaysia  
Karnataka Expressways Privatisation, India*

**RAILS**

*KL LRT System II (PUTRA), Malaysia  
Express Rail Link (ERL), Malaysia*

**AIRPORTS**

*Kuala Lumpur International Airport, Malaysia  
Kang Keng Airport, Cambodia*

**PORTS**

*West Port Development, Malaysia  
Colachel Port Development, India*

**BUILDINGS**

*Kuala Lumpur Sentral Station, Malaysia  
Best World Technopark, Philippines*

**BRIDGES AND TUNNELS**

*Malaysian-Singapore 2nd Crossing, Malaysia  
KL City Centre Tunnels and Access Ramps, Malaysia*

**WATER RESOURCES**

*Kinta River Flood Mitigation, Malaysia*



The HEB Group has a total staff strength in excess of 650 people, including 250 professionals from various disciplines of the engineering industry. With the amalgamation of resources from the group, our company is able to provide comprehensive services in all appropriate branches of engineering. Our services cater not only to the Federal and Local Government agencies, but also to the private sector; and not forgetting leading international development and financial institutions such as the Asian Development Bank and the World Bank.

Having started as an engineering design and consultancy services company, HEB as a group, has over the years gained invaluable experience and expertise by undertaking other projects related to project management, construction management, turnkey implementation and facility management. As a result, the Group has handled some very major and prestigious projects within Malaysia. Internationally, the Group has had joint ventures in Philippines, South Africa, Brunei and India.

With more than two decades of engineering experiences nationally and internationally, HEB has matured into a reputable organisation and is poised to handle both complex and projects of any magnitude, from concept to commissioning.



# mission statement

At HEB Group of Companies, our vision is simple.

*“To be recognized as Malaysia’s premier engineering consultant, as reflected in our outstanding contribution to the development of the nations infrastructure; and retain this position through excellent services and superior technical quality, innovation and performance”*

This vision is realised through:

- Strong leadership to ensure timely and speedy implementation of both corporate objective and goals.
- Existing effective and efficient corporate structure to provide maximum operating efficiencies to the Group.
- The vast base of experience within the Group that helps to leverage its niche in the engineering arena.
- The availability of capital within the Group to provide adequate funding strength for Group operations.
- Continuous quality engineering services upgrading through constant process re-engineering and training.



# engineering activities



HEB Group provides a total engineering practice, from feasibility and planning studies, to design and construction through to the final commissioning of a project. HSS has earned the reputation for delivering professional, efficient services to clients as exhibited through our track record of past performances in all disciplines of engineering. This stands as a testimony to our commitment and pride in professional excellence.



## **FIELDS OF ENGINEERING ACTIVITY**

- Airports
- Bridges
- Buildings and Structures
- Building Services
- Dams and Reservoirs
- Drainage and Irrigation
- Geotechnical and Foundations
- Hydroelectric Services
- Infrastructure and Municipal
- Ports and Harbours
- Power Generation and Distribution
- Railways
- Roads and Highways
- Sea and River Defence
- Sewerage and Public Health
- Transportation Planning
- Water Resources and Water Supply



The success of HEB Group is rooted in staff quality and its leading edge engineering technology. The company is committed to investing in both staff and technological development to remain at the forefront of the engineering sector.

The following are the scope of works that HEB Group of Companies offers:

- Project Identification and Assessment of Needs
- Location Studies
- Land and Geotechnical Survey
- Technical and Engineering Feasibility
- Master Planning
- Environmental Impact Assessment
- Economic and Financial Appraisals
- Preliminary and Detailed Design
- Specifications and procurement
- Computer Stimulants and Modelling
- Contract Documentation and Administration
- Project Scheduling
- Material Testing and Inspection
- Quality Control and Construction Supervision
- Equipment Inspection and Commissioning
- Cost and Budget Control
- Total Project Management



Anglo-Japanese Airport Consortium, AJAC  
Akitek Jururancang Malaysia  
Aktif Unggul Sdn Bhd  
Arab-Malaysian Development Sdn. Bhd.  
Asian Development Bank, ADB  
ATZ Consult Sdn Bhd  
Amat Muhibbah Sdn Bhd  
Berjaya Corporation  
Berkat Hasil Sdn Bhd  
Besraya (M) Sdn Bhd  
Business Focus Sdn Bhd  
Century Batteries (M) Sdn Bhd  
CEUPACS Sdn Bhd  
Chase Perdana Bhd  
Diversified Resources Bhd.  
DRB – HICOM  
Ernst and Young (M) Sdn Bhd  
Ekovest Bhd  
Express Rail Link Sdn. Bhd.  
Gadang Engineering Sdn Bhd  
Gamuda Sdn Bhd  
Gasing Heights Sdn Bhd  
General Lumber (M) Bhd  
Golden Archers (M) Sdn Bhd  
Granite Industries Bhd  
Halcrow Consultants Sdn Bhd  
Indian Railway Construction Co. Ltd, IRCON  
John Tang and Associates  
Kaseh Lebuhraya Sdn Bhs  
Kedeco Sdn Bhd  
Kee Hup Properties Sdn Bhd  
Kelang Multi Terminal Sdn Bhd  
Kesturi Sdn Bhd  
KETENGAH  
Klang Port Management Sdn Bhd  
KL-Kuala Selangor Expressway Bhd  
KLK Consult Associates Sdn Bhd  
KM Engineering  
Kotak Kajang Sdn Bhd  
Konsortium Lapangan Terjaya  
Konsortium LPB Sdn Bhd  
Konsortium Zabima-Emrail  
Kuala Lumpur International Airport Berhad  
Kuala Lumpur Transit Group, KLTG  
Kumpulan Guthrie Bhd  
LET Pacific  
Lembaga Pelabuhan Kelang  
Lumut Maritime Terminal Sdn Bhd  
LPK Distripark Sdn Bhd  
Malaysian Airports Holdings Berhad  
Malaysian Resources Corporation Bhd (MRCB)  
Malaysian-Thai Development Sdn Bhd  
Maju Holdings Sdn Bhd  
Maju Expressway Sdn Bhd  
Maxis Bhd  
Menang Corporation  
Metramac Sdn Bhd, MRCB  
MRT Corp  
Mudajaya Corporation Berhad  
Muhibbah Engineering Sdn Bhd

Nortek Sdn Bhd  
North-West Water (M) Sdn Bhd  
NSIDC  
Obayashi Corporation  
Peremba Corporation  
Pembinaan Punca Cergas Sdn Bhd  
Penang Bridge Sdn Bhd  
Penang Port Sdn Bhd  
Petronas  
Port Dickson Power Sdn Bhd  
Port Klang Distribution Park Sdn Bhd  
PPC Glomac Sdn Bhd  
PLUS Expressway Bhd  
Project Lebuhraya Utara-Selatan Bhd, PLUS  
Projek Lintasan Kota Holdings Sdn Bhd  
Project Genting Kelang Sdn Bhd  
Proton City Development Corporation Sdn Bhd  
Putrajaya Holding Bhd.  
Rahika Holdings Sdn Bhd  
Rajin Cekap Sdn Bhd  
Reka Rancang Sdn Bhd  
Salak Park Development Sdn Bhd  
SCOMI Group Berhad  
Selangor Water Supply Company (SYABAS)  
Sejati Avenue Sdn Bhd  
Shah Alam Properties  
Shapadu Holdings  
Shell (M) Bhd  
Sime Darby Engineering Sdn Bhd  
Sime Sembcorp Sdn Bhd  
Sime UEP Development (M) Sdn Bhd  
Sin Heap Lee – Marubeni  
SKVE Holdings Sdn Bhd  
South Johor Investment Corp Bhd  
SP Setia Bhd  
Sunrise Sdn Bhd  
Syarikat Serdang Maju Sdn Bhd  
Syarikat Prasarana Negara Bhd  
TAK Design Consultants Sdn Bhd  
Tanming Raya Sdn Bhd  
Tenaga Nasional Bhd.  
Transtherm Engineers Sdn Bhd  
Terratech Consultants Sdn Bhd  
TCL Industries (M) Sdn Bhd  
Tropical Terrain Sdn Bhd  
United Engineers (M) Bhd, UEM  
UEM Elite  
Urusungai Sdn Bhd  
West Coast Expressway Sdn Bhd  
Westports Malaysia Sdn Bhd  
World Bank  
YTL Bhd  
Seller Sdn Bhd  
Zublin Sdn Bhd  
Zelleco Sdn. Bhd.



# major clients

government authorities

Construction Industry Development Board (CIDB)

Department of Irrigation and Drainage, JPS

Klang Port Authority, KPA

Kuala Lumpur City Council DBKL

Malaysian Railways, KTM

Malaysian Industrial Development Authority, MIDA

Malaysian Highway Authority (MHA)

Ministry of Public Enterprise

Ministry of Defence

Ministry of Education

Ministry of Transport

Ministry of Works

Ministry of Natural Resources & Environment

National Electricity Board, TNB

Petaling Jaya Municipal Council, MPPJ

Public Works Department, JKR

State Economic Planning Unit, Johor

State Economic Planning Unit, Kelantan

State Economic Planning Unit, Perak

State Economic Planning Unit, Pahang

Town and Country Planning Department, JPBD

University Teknologi Malaysia, Johor, UTM





Brunei Economic Development Board (BEDB), Brunei

Techno Park Management, Dubai

Nakheel, Dubai

Ministry of Public Works, Ras Al Khaimah

Ministry of Public Works, UAE





With an embedded understanding of today's practices and a vision for tomorrow's technologies, HEB Group maintains a register of "specialist expertise" in order to draw from foreign strength and support where necessary. We firmly believe that this provides an excellent base for the transfer of advanced international technologies, which in turn enables the HEB Group of Companies to stay ahead in today's fast paced and ever changing engineering environment.

The following are some examples of close, foreign associates that the company has worked with:

AMEC, United Kingdom	SNC-Lavalin, Canada
BAA PIC, United Kingdom	Sir William Halcrow and Partners, United Kingdom
British Columbia Hydro, Canada	STUP Consultants, India
Carl Bro International, Denmark	Speedwing (British Airways), United Kingdom
De Leuw Cather, USA	Swedpower, Sweden
EDCOP, Philippines	Symond Travers Morgan, UK
IRCON, India	Taywood Engineering Limited, United Kingdom
McLachlan Consultants, Australia	Tonkin & Taylor International, New Zealand
MVA Asia, Hong Kong	Waste Management Inc, USA
Norconsult, Norway	Woodward Clyde Int., USA
Posford Duvivier, United Kingdom	Yachiyo Engineering Corporation, Japan
Queensland Rail, Australia	
Snowy Mountains Engineering Corporation, Australia	





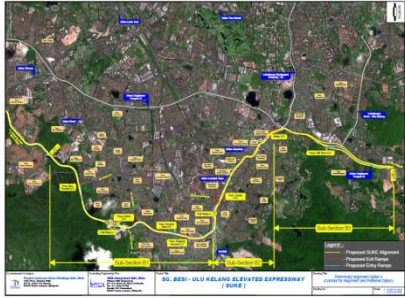
**experience**

*The following projects listed in the Project Experience and Project Data Sheet section are several of our many project experiences. For the full listing of our experience, please log on to our website at [www.hssgroup.com.my](http://www.hssgroup.com.my).*



**project data sheets**





**Project Name :** Sg. Besi - Ulu Kelang (SUKE) Elevated Expressway

**Client :** Projek Lintasan Kota Holdings Sdn Bhd (PROLINTAS)

**Description :** The 25km fully elevated expressway from Sungai Besi to Ulu Kelang (SUKE) was to relieve congestion at MRR2 and link major highways such as Lebuhraya Shah Alam (KESAS), Cheras-Kajang, Ampang, KL Elevated Highway (AKLEH) and DUKE. SUKE has two sections namely Section A and Section B where HSS undertook the Highway Engineering Design for Conceptual and Preliminary Design Stage, Detailed Design and Construction Supervision of the SUKE – Package B.

**Services :** Management of all designs, construction, interface, database & pavement.

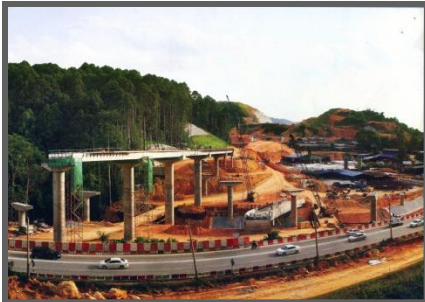


**Project Name :** Maju Expressway (Kuala Lumpur – Putrajaya Highway)

**Client :** Maju Holding Sdn Bhd

**Description:** A 42km expressway that links Kuala Lumpur to the new KL International Airport with 10km elevated structure through conurbation of Kuala Lumpur. It Has five nos. of interchanges, seven entry/exit ramps, two rest & service areas and two toll plazas.

**Services:** Project Management, Detailed Design & Construction Supervision.



**Project Name :** KL-Kuala Selangor Expressway (KLS Expressway)

**Client :** KL-Kuala Selangor Expressway Sdn Bhd

**Description:** KL-Kuala Selangor Expressway, a 33km new alignment with two lane dual carriageway forms part of the KL Outer Ring Road linking the coastal area in the north-western region of Selangor and the northern region of Kuala Lumpur which corridor has been earmarked since late 1980s. The expressway in divided into 2 packages namely Package 1 from Assam Jawa to Kundang and Package 2 from Kundang to Templer Park.

**Services :** Project Management Consultancy



**Project Name :** Fourth Lane Widening between Kuala Lumpur and Seremban

**Client :** PLUS Expressway Berhad

**Description:** Due to the worsening level of service during peak hours, PLUS decided to widen this section from dual three to dual four carriageway. HSSI carried out the concept study leading to detailed engineering design.

**Services :** Collate as-built drawings, Site reconnaissance survey, Construct cost estimates, Detailed engineering design to be carried out upon confirmation of options, Detailed design to include co-ordination for surveys, site investigation, engineering design works, quantities take-off, bills of quantities and tender documentation





**Project Name :** South Klang Valley Expressway (SKVE)

**Client :** SKVE Holdings Sdn Bhd

**Description :** Design, construction, maintenance, operation and management of the South Klang Valley Expressway (Approximately 43.4 km).

**Services :** Project Management Consultancy



**Project Name :** West Coast Expressway

**Client :** West Coast Expressway Sdn Bhd

**Description:** West Coast Expressway (WCE) extends down the west coast of Peninsular Malaysia from Taiping in Perak, to Banting in Selangor. The WCE will comprise approximately 255km of high quality expressway extending from the junction between Federal Route 60 and Federal Highway Route 1. Approximately 70 percent of the project length traverses through coastal terrain characterised by alluvial soil with deep seated clay.

**Services :** Detailed Design



**Project Name :** North-South Expressway Central Link & KLIA Expressway

**Client :** Expressway Lingkaran Tengah Sdn Bhd

**Description:** The proposed NSE Central Link (NSECL) and Kuala Lumpur International Airport Expressway is a dual three-lane carriageway expressway which is approximately 2.5km. The project included the construction of a number of interchanges and the construction of part of the KLIA Expressway.

**Services :** Alignment design for expressway mainline and interchanges, Ground treatment designs, Bridges and viaducts, Hydrological & hydraulic analysis of catchment areas and drainage designs & Toll Plaza designs



**Project Name :** KL-Penang Through Traffic/ Ipoh-Jelapang

**Client :** PLUS Expressway Bhd

**Description:** Upgrading of the North-South expressway between Ipoh South toll barrier and the Jelapang toll barrier which involved the isolation of the local Ipoh traffic from the inter-urban traffic on the expressway by providing two parallel local roads on either side of the expressway.

**Services:** Preliminary & detailed engineering designs including construction supervision.





**Project Name :** East Coast Rail Route

**Client :** East Coast Economic Region Development Council (ECERDC)

**Description :** ECERDC appointed HSS to conduct a feasibility study of the proposed route and to determine a preliminary alignment that will best serve the East Coast. The proposed route was approximately 545km in length, from Kuala Lumpur to Tumpat, Kelantan, passing through Mentakab, Kuantan, Kuala Terengganu and Kota Bharu.

**Services :** Feasibility Study included engineering studies, ridership studies, systems & rail operation studies, environmental screening, landuse & socio economic studies, economic & financial evaluation



**Project Name :** Electrified Double Tracking, Rawang to Ipoh

**Client :** DRB-HICOM

**Description:.** Electrification of approximately 178 km of existing railway line between Rawang and Ipoh, included 400 track kilometers of railway track, 18 Nos Stations/ Halts, 78 Nos Railway Bridges, 20 Nos Road Over Rail Bridges & over 300 Culverts.

**Services :** Project Management Consultancy



**Project Name :** Pelabuhan Tanjung Pelepas Rail Link

**Client :** Ircon International Pvt. Ltd.

**Description:** Design, Construction, Testing, Commissioning and Guarantee of a rail link from the existing KTMB link between Senai and Kempas Baru to Pelabuhan Tanjung Pelepas. HSS was responsible for the overall design and construction quality supervision of the Civil and Structural works.

**Services:** Supervision & Coordination, detail topographical survey, detail design of structural, geotechnical, drainage & bridges design, viaducts, vehicular box culverts & pedestrian bridges & Liaison with government agencies and approval management.



**Project Name :** Electrified Double Tracking, Ipoh to Padang Besar

**Client :** MMC – GAMUDA JV

**Description:.** Responsible for the design of road geometric, junction, bridge, geotechnical, hydrology, drainage, road marking and road furniture, the design of electrical, design and installations, namely traffic signal and street lighting. The detailed design by HSS shall achieve the key objective of minimizing the construction while maintaining with the Design Brief standards.

**Services :** Detail design consultancy





**Project Name :** Projek Mass Rapid Transit Lembah Kelang:Jajaran Sungai Buloh - Kajang  
**Client :** Mass Transit Corporation S/B

**Description:** The Klang Valley Mass Rapid Transport (KVMRT) from Sg. Buloh to Kajang (SBK), 51km long, while 41.5km elevated, 9.5 km underground with 31 stations of which 7 are underground, 16 nos. park & ride facilities with multi level car parks. Some will be integrated with existing stations of KTMB, ERL, LRT, and Monorail. HSS appointed, in a JV with SNC Lavalin as the Independent Consultant Engineer (ICE).

**Services:** The ICE's role includes design review, providing an oversight on construction activities, including tendering, quality and safety assurance, and progress monitoring.



**Project Name :** Ampang (AMG) Line Extension Project

**Client :** Syarikat Prasarana Negara Bhd

**Description:** Prasarana appointed HSS to undertake the Detailed Design and Consultancy Services for the proposed Ampang (AMG) line extension which is approximately 17.7km in length from the existing Sri Petaling Station to the terminal station at Putra Heights.

**Services:** Services included professional engineering (i.e. C&S and M&E engineering and system works), architectural and quantity surveying services and detailed design as well as supervision works.



**Project Name :** Feasibility Study of the Penang LRT/Monorail System

**Client :** Penang Port Sdn Bhd

**Description:** HSS were appointed as Consultants to undertake the Pre Feasibility Study of the Proposed Penang LRT by Penang Port Sdn Bhd.

**Services :** Traffic Dispersal Studies & Preliminary Environmental Impact Screening



**Project Name :** Express Rail Link (ERL)-Technical Support & Project Management

**Client :** Express Rail Link (ERL) Sdn Bhd

**Description :** Appointed as the Technical Support Consultant to assist in the management and implementation of the 50km Express Rail Link project from Brickfields to KLIA, Sepang

**Services :** Overall Project Management of ERL, Engineering Management of the Civil & Structural Works and Railways Systems, Planning & Cost Control, Construction Management, Design Review and Preliminary Engineering Study





**Project Name :** Westport Development

**Client :** Westports Bhd

**Description :** The project under involved the overall master plan which also included construction of cargo/container berths, provisions for multi-purpose berths, liquid bulk and dry bulk berths and other support facilities.

**Services :** Overall Master Plan



**Project Name :** Lumut Port Industrial Park

**Client :** Lumut Maritime Terminal Sdn Bhd

**Description:** The Lumut Industrial Park (LPIP) consist Mix-Industrial development inclusive of Port, Light, Medium, Heavy and Terrace Factory Shoplots. HSS was appointed to provide the infrastructural master planning, liaison with the approving authorities and obtain the approvals.

**Services:** Water Supply Master Plan, Drainage Master Plan, Earthworks Master Plan, Road Master Plan, Traffic Studies & Geotechnical Studies.

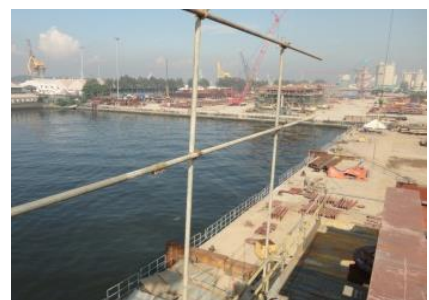


**Project Name :** Melaka Port & Industrial Development

**Client :** Nortek Sdn Bhd

**Description :** The Project envisage development of an area of about 1000 acres by reclamation using hydraulic fill. The Master Plan has projected for 280,000 freight tons of general cargo and 104,000 TEUs of container in the preliminary report to year 2005. The report also recommended for a general cargo Berth, a container Berth and a Dry Bulk Berth.

**Services :** Project Feasibility, Overall Master Plan, Economic Evaluation of Project Options, Environmental Impact Assessment, Bathymetry Survey & Market Survey and Traffic Forecast



**Project Name :** Yard Development Works, Pasir Gudang, Johor

**Client :** Sime Sembcorp Sdn. Bhd.

**Description:.** Provide engineering consultancy services and site supervision for the development of wharfs and building works within Sime Sembcorp yard development area at Pasir Gudang industrial area, Johor Darul Takzim.

**Services :** Design and supervision





**Project Name :** Development of KLIA 2

**Client :** Malaysia Airports Holdings Berhad

**Description:** Preliminary & Detail Design of the Bulk Earthworks (Package EW02) for the airside surfaces, ground improvement works and drainage works.

**Services :** Preliminary Design, Detail Design and Construction Supervision



**Project Name :** Kuala Lumpur International Airport (KLIA)

**Client :** K L International Airport Berhad

**Description :** KLIA was constructed on a designated site some 50 km south of Kuala Lumpur. Phase 1 developed to handle 25 million passengers per annum. included the necessary utilities, perimeter road around the airport, interchanges, structures & rail systems connecting into the main access links.

**Services :** Detailed design of bulk earthworks, main drainage works with three balancing ponds for discharge controlled into the Sungai Labu & Sungai Sepang Kecil. Detailed design of river improvements, preliminary design of horizontal geometry & vertical profile of airside operational surface & landside roads.



**Project Name :** Langkawi International Airport

**Client :** Arkitek Jururancang Malaysia

**Description:** The redevelopment and extension of the Langkawi International Airport included extension of the terminal building, underground cable trench and mechanical & electrical services. HSS was also responsible to coordinate the project and inspect the works. As part of the quality management policy, inspection check testing of all materials and workmanship was carried out to ensure compliance with specifications and plans.

**Services:** Renovation and extension of existing terminal building, Elevated water tower, Sub station, Suction Tank, Cable Trench and Hard Landscape Structure, Earthworks, Drainage, Sewerage & Road and Water supply



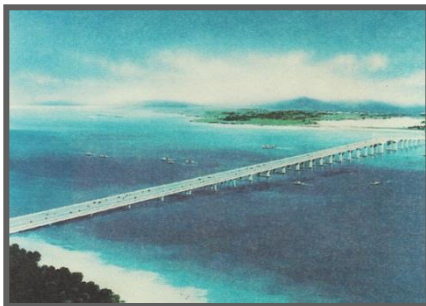


**Project Name :** Penang Bridge Widening

**Client :** Penang Bridge Sdn Bhd

**Description:** The level of traffic congestion on the existing Penang Bridge made it evident that it was essential for the bridge to be widened. In line with the Government's Policies widening of the Penang Bridge was commissioned. HSS Integrated Sdn Bhd was appointed as the Engineering Consultants to the third lane widening of the Penang Bridge.

**Services :** Preliminary Engineering Study, Traffic Studies, Preliminary Environmental Impact Screening Study, Detailed Engineering Design, Pre – qualification, Tender Documentation



**Project Name :** Malaysia Singapore 2nd Crossing

**Client :** Lintasan Kedua (M) Bhd

**Description:** The project comprised the detailed engineering design check of the 2nd Crossing Bridge across the Straits of Johor between Malaysia and Singapore. The bridge was made of a prestressed concrete box girder carrying dual three-lane carriageways with two navigational span of the Singapore side. The overall length of the bridge is approximately 2.0 kilometers.

**Services :** Reviewed the joint technical design brief, checked the design criteria & endorsed the calculations and structural drawings prepared by the design consultant, carried out an independent design check on the structural elements, and reviewed the design specifications.

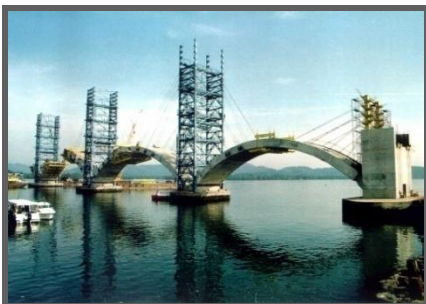


**Project Name :** Bridge Crossing Sg. Pulai & Link Road from Tanjung Pelepas

**Client :** Seaport Worldwide Sdn Bhd

**Description:** The design of bridge viaduct and link road from Tanjung Pelepas to Tanjung Bin totalling a length of 7.3km. The carriageway is dual two lane with total width of 22.5m. The crossing at Sungai Pulai involves a long viaduct bridge across the 826m wide river channel. The mainspan of the marine navigational bridge is 160m with 90m approaches at both side which consist of balanced cantilever box girder with post-tensioning while the remaining spans at approaches are T-beams with insitu slab.

**Services:** Bridge Structural, Embankment & Pavement Design, Site Supervision, Tender & Contract Administration & Project Management



**Project Name :** Padang Lalang to Tanjung Lumpur, Kuantan

**Client :** Gamuda Sdn Bhd

**Description :** This Project involves the designing of a bridge with 11 spans totalling a length of 460 metres. The longest span was 86 metres. The spans were prestressed double cell box girders while the remaining were T-beams. The main piers were designed to take ship impact loading.

**Services :** Bridge Structural Design, Embankment Design & Pavement Design.







**Project Name :** Proposed New Head Quarters For FINAS, Damansara Damai

**Client :** NilaiTera Sdn Bhd

**Description:** HSS appointed to manage the overall design and construction work for the New HQ for Finas and Filem Negara Malaysia in Damansara Damai, Petaling Jaya. The project consist of 18 storey Office Tower, Multipurpose Hall, Studios and 2 levels of underground basement (car park and service floor)

**Services :** Civil & Structural Detailed Design, Construction Supervision and Submission to local Authorities



**Project Name :** Mixed Development at Section 52, Petaling Jaya(PJ)  
(MYIPO – Tower 6)

**Client :** PJ Sentral Development Sdn Bhd

**Description:** HSS appointed to manage the overall design and construction work for the Proposed Mixed Development of Tower 6 located in Petaling Jaya, named as My IPO tower on 338 acres of land consisting of 24 + 5 Storey Office Tower & 5 levels of underground basement (car park & service floor). The development adopts the Green Building Index (GBI) Gold and US Leadership in Environmental & Energy Design (LEED) Neighbourhood & Township Development Gold rating for overall development & achieve MSC Status.

**Services:** Civil & Structural Detailed Design & Construction Supervision,



**Project Name :** Proposed Rehabilitation Centre in Ayer Keroh, Melaka

**Client :** Pertubuhan Keselamatan Sosial (PERKESO)

**Description:** The proposed project is located in Alor Gajah Melaka and is the first rehabilitation medical HUB for PERKESO. The 53 acre land is in the vicinity of Rancangan Kawasan Khas Hang Tuah Jaya. HSS's scope include design and construction stage of the head office technical support for all Infra structures, buildings and utilities for the C&S and M&E services.

**Services :** Geotechnical investigation and assessment, Detailed design for both C&S and M&E works, Tender documentations, Construction supervision and technical support during construction.



**Project Name :** Matriculation College in Banting, Selangor

**Client :** Maju Holdings Sdn. Bhd.

**Description:** The Matriculation College located in Banting, Selangor on a 90 acre site comprises academic, administration, residential, recreational and associated facilities. HSS Integrated Sdn Bhd's scope include design and construction stage head office technical support for all Infra structures, buildings and utilities for the C&S and M&E services.

**Services:** Geotechnical investigation and assessment, Detailed design for both C&S and M&E works, Tender documentations, Construction supervision and technical support during construction.



# township development



**Project Name :** Bandar Baru Nilai Development

**Client :** NS Industrial Development Corp.

**Description :** HSS Integrated was appointed to provide engineering consultancy services for the proposed Bandar Baru Nilai (BBN). The project covered a total area of approximately 6230 acres and HSS Integrated's scope of works covered 2700 acres. Bandar Baru Nilai was designed to serve a major Commercial Corporate Centre for the northern part of Negeri Sembilan.

**Services :** Geological & geotechnical evaluation, earthworks, road network, pavements, Interchanges, underpass, drainage, detention ponds & hydrology, bridge structural design, highway structural design, sewerage system, Eastern access & traffic analysis.



**Project Name :** Bukit Raja Integrated Township, Selangor

**Client :** Sime UEP Development Sdn Bhd

**Description:** A mega self contained township covering 1762 acres (stage 1) is a township comprising of residential, commercial and industrial units has its tagline, "DOORWAY TO A NEW WORLD IN KLANG". HSS was appointed to provide Engineering Consultancy Services for the infrastructure development which includes soil investigation, design and supervision of all civil works.

**Services:** Soil investigation, design of civil & infrastructure Works, Tender Documentation / Contractual Matters, Construction Supervision & Environmental Impact Management



**Project Name :** Sri Permaisuri Township Development

**Client :** PPC Glomac Sdn Bhd

**Description:** Input to the masterplan and infrastructure development of Bandar Sri Permaisuri also included investigation, design and supervision of all C&S as well as M&E works. The township development was a joint venture project between Dwtasik Sdn Bhd and Kuala Lumpur City Hall (DBKL).

**Services:** Masterplan, Hydrological & Hydrographic Surveys, Soil Surveys, Planning Studies, Feasibility Studies, Design, Soil Mechanic & Foundation, QS & Cost Estimating, Estimation & Contract Document & Construction Supervision



**Project Name :** Kwasa Damansara Township Development

**Client :** Kwasa Land Sdn Bhd

**Description :** Kwasa Damansara Township is a 2,300 ac new township in Sg. Buloh which has been announced as part of the ETP programme. The township aims to be a digital city with residential, commercial and mixed use zones.

**Services :** Project Management Consultancy



# Infrastructure (Pipeline works)



**Project Name :** Replacement of A.C Pipes for Districts of Kuala Langat, Kuala Selangor and Sepang

**Client :** Kementerian Tenaga, Air dan Komunikasi /  
Syarikat Bekalan Air Selangor (SYABAS)

**Description :** The replacement of old pipes in the critical areas is to be undertaken and HSS Integrated Sdn Bhd have been appointed as a Consulting Engineers (for the works) for the District of Sepang Kuala Selangor and Kuala Langat with the estimated total construction costs of RM 65 millions.

Generally, the tasks involved comprehensive review, design and construction work to replace old pipes. Pipelines ranging from 600mm dia to 150mm dia for a total of 230 km. Pipes replacement involve rural and urban areas within the districts.

**Services :** Professional design and supervision on construction of the above works



**Project Name :** Design and Build Water Plant MLD 120 and 28 MLD, Service Tank, Crude Water Pipe Installation and Retrofitting, Kuala Terengganu

**Client :** Senie Associates Sdn Bhd

**Description:** Civil and Structural design for 44MLD raw water intake structure at Pulau Musang and 28 MLD membrane water treatment plant building at Pulau Bahagia, Kuala Terengganu.

**Services:** Detail design for reinforce concrete jetty type raw water intake, infrastructure and TNB building at proposed 44 MLD raw water intake Pulau Musang.

Detail design for steel structural membrane water treatment plant building and reinforced concrete administration building at Pulau Bahagia, Kuala Terengganu.

Proof on concept 2MLD containerised membrane treatment plant of Pulau Musang



**Project Name :** Liquid Bulk Terminal Pipe Rack Analysis

**Client :** Westports Malaysia Sdn Bhd

**Description :** WMSB engaged HSSI to undertake an analysis of the existing pipe rack structure that was located in their Liquid Bulk Terminals. WMSB with the intention to add further investor required for the existing structure to be increased by one (1) or two (2) tiers. HSSI with IFP undertook the analysis of the existing pipes and structural forces to ascertain if the current pipe rack structure could be modified in future.

**Services :** Analysis of Flow & Loading along Existing Pipe Rack  
Structural Analysis on Existing Piperack structure for Additional Tiers



# water resources

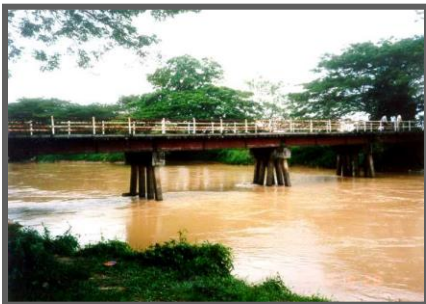


**Project Name :** Kinta River Flood Mitigation & Catchment Area Rehabilitation

**Client :** Department of Irrigation & Drainage, Government of Malaysia

**Description :** This project involved a comprehensive study of the flood problems in Sg. Kinta catchment and to formulate measures to rehabilitate the catchment which has been extensively mined in the past.

**Services :** Flood mitigation studies involving hydrology & hydraulic analysis, mathematical modelling of river flow & sediment, mining land rehabilitation, agricultural options & other possible uses, legislative, resource planning & sociological studies, environmental improvement plant for Sg. Kinta within Ipoh, establishment of pilot project for land rehabilitation & economic evaluation of project options..



**Project Name :** Lemal & Rantau Panjang Flood Protection Scheme

**Client :** Department of Irrigation & Drainage, Gov. of Malaysia

**Description:** For the Lemal area, this project involved the construction of a dyke measuring 1 km away in parallel to the Golok river. For the Rantau Panjang area, the existing Lubok Stol-Rantau-Lanchang State road was upgraded to a flood protection bund to protect the agricultural areas and the surrounding towns. The increase in water levels in Golok river was reduced to pre-works level via construction of a 500m in width by pass channel and bridge.

**Services :** Flood mitigation studies, mathematical modelling of flood, detailed design of floodway & river bunds, river improvement and flood corridor, river walls & bank protection, geotechnical investigation & design, sociological studies, design of road network & pavements & EIA



**Project Name :** Kota Tinggi-Detail Design River Protection Works & Landscaping

**Client :** Dep. of Irrigation & Drainage

**Description:** The project entailed the detail designs for bank protection works, recreational facilities and landscaping works for Sungai Johor at Kota Tinggi for a stretch of 1.2km on both banks of the river.

**Services :** Investigation and analysis for the cause of river bank erosion of the effected areas, Formulate conceptual designs of river bank protections works deemed necessary to mitigate erosion problem, Detailed design of river bank protection works, Detailed design of all outlet structures and associated works & Detailed design of landscaping works and recreational facilities.



**Project Name :** Kota Tinggi Drainage Master Plan Study, Johor

**Client :** Dep. of Irrigation & Drainage

**Description:** The consultancy services provided involved the undertaking of a Drainage Master Plan Study, comprising an area of 2,000 ha within the boundaries of the district council of Kota Tinggi.

**Services :** Formulation of drainage study strategy for Kota Tinggi Town, proposals for the improvement of the drainage system, formulation of a plan to beautify the waterway corridors, proposals for the protection of river bank slips & proposals for institutional arrangements for the operation and maintenance of the proposed drainage system.



# power plant



**Project Name :** Transtherm Power Industries at Lumut Port Industrial Park  
Sitiawan, Perak

**Client :** Transtherm Engineers Sdn. Bhd

**Description :** The project site of approximately 28 acres in area is situated on reclaimed land within the Lumut Port Industrial Park, Sitiawan. The development comprises structures of reinforced concrete construction and 3 steel industrial buildings. It also includes a 4 bay 30m span steel structure with a build up area of 14,400 m2.

**Services :** Substructure evaluation and design, Super-structure evaluation and design and design of roads, water reticulation, drainage and sewer system



**Project Name :** Manjung Power Plant, Manjung, Perak

**Client :** Janamanjung Sdn. Bhd

**Description:** The development shall comprise office complex, boilers production factory buildings, workers centre and other basic necessities. The aim of the development is to support, fabricate and supply boilers to the proposed TNB Power Station (Janamanjung Power Plant)

**Services :** Preparation of tender and contract document for soil investigation, Mechanical & Electrical Design, Architectural Services and Civil & Structural Design



**Project Name :** Panglima CCGT Power Plant, Teluk Gong, Melaka

**Client :** Zelan Construction Sdn. Bhd

**Description:** HSSI were appointed by Zelan Construction Sdn Bhd to provide engineering consultancy services for the Panglima CCGT Power Plant Main civil works.

**Services :** Design of Civil and Structural Works, Power Stations, Building and Water Supply



**Project Name :** Construction of the Balance of Plant (BOP) for the 1000MW Coal Fired Power Plant Extension

**Client :** Mudajaya Corporation Berhad

**Description:** Located approximately 10 km south of Lumut town and accessible by road only. The project consists of the design and construction of a 1000MW coal fired power plant for Tenaga Nasional Berhad. had appointed HSSI was appointed by Mudajaya Corp. Berhad as their Geotechnical, Civil, Structural and Mechanical & Electrical Engineering Consultant for the Balance of Plant.

**Services :** Geotechnical, Civil & Structural, Mechanical & Electrical and Building MEP Services for the project



# petrochemical plant



**Project Name :** 1,220mw power plant equipped with 4 gas turbines and 2 steam turbines with 6 generators at my 1008 Pengerang Cogen Plant project in Pengerang, Johor Darul Takzim  
**Client :** ExPG Engineering Sdn Bhd

**Description :** Lighting and small power design for Steam Turbine Building, Gas Turbine Building, Feed Water Pump Building, Cooling Tower Building, Water Treatment Plant Building, Demim Plant, Storage Buildings for Chemical & Lube Oil Storage Fuel Gas Supply Building, Fire Fighting Building, Water Treatment Plant Building and Fire Tank Building.

**Services :** Provision of schematic drawings,  
Layout drawings,  
Voltage Drop Calculations,  
LUX Level & Simulations and Associated KKS Codes.  
In addition, installation guides for Equipment will be provided such as  
Ceiling Lights,  
Cable Tray,  
Cable Routes,  
Junction Box etc.

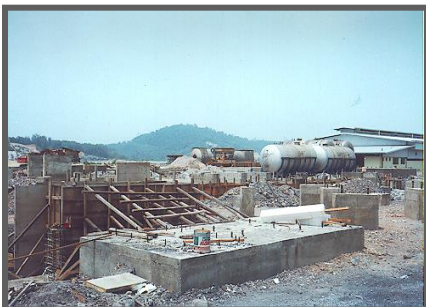


**Project Name :** Gebeng Industrial Park – Environmental Feasibility Studies

**Client :** Unit Perancang Ekonomi, Pahang

**Description :** HSS was appointed by Unit Perancang Ekonomi, Pahang to carry out a Study for the development of Gebeng Industrial Estate until the year 2010. The study focused on the conceptual planning giving inputs to the Petrochemical based or other related industries, formulate strategies, programme & modern operation for the development up to the year 2010, preparation of the land zoning plan & design for the industrial lots & infrastructural facilities and to formulate the environmental protection.

**Services :** The main scope of study undertaken by the firm & its associates studies was on utilities, waste disposal & infrastructure: Rekarancang-Landuse, housing & management, ERE Consultant-Environment, Perunding Trafik Klasik - Transportation, PE Research-Industry, Commercial Training, Research & Human Resources & Acarya-Recreation & Landscaping.



**Project Name :** Petrochemical Plant At Teluk Kalong Industrial Area

**Client :** TCL Industries (M) Sdn. Bhd

**Description:** A petrochemical plant to produce Phatalic Anhydvide and Maleic by Thirumalai Chemical Ltd. Of India has joint venture with Yayasan Terengganu, Promet Berhad and Singapore Highpolymer Chemical Products Pte. Ltd. The plant is divided to 3 phases and upon commissioning the project in Malaysia, TCL will become one of the largest producers of Maleic Anhydvide in the world.

**Services :** Detail design of all infra works, detail design of all structural and M&E works & Geotechnical Assessment.





**Project Name :** Karnataka Expressways Privatisation, India

**Client :** Actacorp Bhd.

**Description :** HSS was appointed by Actacorp Holdings Berhad to conduct the technical and financial feasibility study and submit reports to the Karnataka State Government on their behalf. The expressway traversed mainly along the existing highway while ranging from the flats to mountainous terrains from Bangalore City to Devavali. A total of 9 by-passes around the town is proposed along with 9 toll plazas. The 2<sup>nd</sup> portion of the feasibility study covered the Bangalore-Mangalore stretch of the National Highways with a length of approximately 200km.

**Services :** Technical Study, Traffic Study, Financial Study & Proposal Management



**Project Name :** Nellore By-Pass, India

**Client :** Ministry of Surface Transport, India

**Description:** The by-pass road to Nellore town took off at the existing Madras Vijayawaba section of the National Highway on Madras side and traveled through the outskirts of Nellore town, within the extended municipal limits of Nellore town. The total length of the single 2 lane was 17.60km. The alignment cuts across four irrigation canals, one major river with structural length of about 800m, one railway line and 6 district sections.

**Services :** Data collection, reviewing existing report/data & state government's requirements, traffic transportation study, define route corridors, preliminary site investigation, preliminary engineering design, costing, toll applications study, financial analysis & preparation of privatisation proposal



**Project Name :** Privatisation of NH2, NH5, NH8 and NH9, India

**Client :** Construction Industry Dev. Board Malaysia (CIDB)

**Description:** HSS was appointed by CIDB Malaysia for the preliminary feasibility studies of four laning and new expressway of approx. 2000km of national highways in Uttar Pradesh, Andhra Pradesh, Maharashtra & Gujarat. The objective of the preliminary project proposal was to identify viable stretches of highways for privatisation to National Highway Authority of India (NHAI)

**Services :** Compilation of existing data on road features from various state PWD and Ministry of Surface Transport (MOST), Compilation of traffic data from State PWD and MOST, Schematic drawings for various options for four laning and new expressway & Outline costings for various options



**Project Name :** Privatisation of NH5 and NH9, India

**Client :** Construction Industry Dev. Board Malaysia (CIDB)

**Description:** HSS was appointed by CIDB Malaysia for the detailed feasibility studies of four laning approx. 150km national highways in Andhra Pradesh. The objective of the study was to determine viability of privatisation of the above roads. The detailed feasibility report was submitted to NHAI

**Services :** Preliminary engineering design for 4 laning, visual inspection of existing facilities, pavement and bridges, preliminary construction cost estimates & guidelines for operation and maintenance of the "tolled" facility





**Project Name :** Kang Keng Airport, Cambodia

**Client :** Ariston Sdn Bhd

**Description:** The project includes the development and construction of Cambodia's second international airport and the development of the international casino and convention resort hotel complex at Naga Island and an independent power plant. HSS and Sir William Halcrow and Partners (M) Ltd in a joint venture association was appointed to undertake the preliminary and detailed design of Phase 1 Development of Kang Keng Airport in Sihanoukville, Cambodia.

**Services :** Preliminary and detailed engineering design for taxiway/apron, terminal building area, approach roads, carpark layout, infrastructure drawings drainage, water supply and sewerage, M&E services for airport complex.



**Project Name :** Colachel Port Development, India

**Client :** Construction Industry Dev. Board Malaysia (CIDB)

**Description:** Based on a study by Consulting Engineering Services (I) Ltd. in 1998, the Government of Tamil Nadu requested the Government of Malaysia (GOM) to develop Colachel as a modern Container Transshipment Port with state of art facilities using Westport as a model. HSS in association with Zaidun-Leeng Sdn. Bhd. & Posford Duvivier of UK conducted the studies for the feasibility report for Construction Industry Development Board (CIDB) who were commissioned by the GOM.

**Services :** Market Study, Port Planning, Road & Rail Connectivity, Land Use Planning, Wave Modelling, Development and Marketing & Financial Analysis



**Project Name :** Project Management Services for 5500 units of Houses, Brunei

**Client :** Government of Brunei, Brunei Economic Development Board (BEDB)

**Description:** The Government of Brunei Darussalam through BEDB appointed HSS as the Project Management Consultants (PMC) to assist BEDB to effectively and efficiently manage and implement upto completion three (3) housing developments in Belait, Muara and Tutung districts awarded as a design and build basis under the National Housing Scheme.

**Services :** Project Management for Pre-construction Stage, Construction Stage and Post Construction Stage



**Project Name :** Hanoi Monorail, Vietnam

**Client :** SCOMI Group Berhad

**Description:** Pre-Feasibility Study of 51km proposed monorail in Hanoi City Centre. Study included technical and financial assessment of the proposed monorail system.

**Services :** Conceptual alignment Design, Viaduct Concept, Conceptual Geotechnical and Cost Estimates







**Project Name :** Madinat Al-Arab, Dubai

**Client :** TAK Design Consultants Sdn Bhd

**Description:** Madinat Al-Arab, "City of Million" is the extension of Palm Jebel Ali (2<sup>nd</sup> Palm) covering an area of approximately 30,000 acres.

**Services :** Planning & Preliminary design for the infrastructure works and utility requirement for the development, generate Preliminary Infrastructure and utility plan, generate earthworks quantities & earthworks grading plan and Preliminary junction interchange design and long profile of main roads



**Project Name :** Techno Park Development

**Client :** Techno Park Management

**Description:** Techno Park Development comprises of approximately 1760 hectares, which is intended to be developed as a "high tech hub" with clusters of similar technological industries.

**Services:** Detailed Design and Supervision of Construction for the infrastructure works and utility requirement for the development



**Project Name :** Nad Al Sheba Development, Dubai

**Client :** TAK Design Consultants Sdn Bhd

**Description:** Nad Al Sheba Development with a total of 450 hectares and an additional 150 hectares of a supporting Mixed Use District is intended to showcase Dubai's high profile Horse Racing.

**Services :** Detailed Design Services



**Project Name :** Al Abdally Farm, Kuwait

**Client :** Ministry of Public Works Kuwait

**Description:** The are existing farm areas currently facing acute water shortage. This may be due to insufficient water quantity or low pressure. Contract SE-126 was initiated by the Ministry of Public Works to resolved the Poor Water Issues faced by the farmers in Abdally.

**Services :** Detailed Engineering Infrastructure Preparation of Contract & Tender documentation and Construction Supervision



**matrix**





## BUILDINGS

PROJECT DESCRIPTION	CLIENT	Site Investigations & Survey	Design	Tender & Contract Document	Construction Supervision	Condition Assessment	Fit-out	Renovation/Extension/Rehabilitation
Remedial & Rehabilitation Works for the Main Block of Sultanah Aminah Hospital, Johor Bahru	JKR	✓	✓	✓	✓	✓		✓
Club House at Pulau Besar Golf & Country Resort, Melaka	Pembangunan Pulau Bertuah	✓	✓	✓	✓			
Selbourne Square, Shah Alam City Centre Building	MRCB-Selborn Corporation	✓	✓	✓	✓	✓		
Menara ESSO, Kuala Lumpur City Centre	ESSO Malaysia						✓	
Office Park at Saujaya Subang, Selangor	Peremba Development	✓	✓	✓	✓			
Extension to Armitage Shanks Office, Petaling Jaya	Armitage Shanks	✓	✓	✓	✓			
Selayang Medical Centre, Selangor	Obayashi Corporation	✓	✓	✓	✓			
Network Operations Centre, Selangor	Emartel	✓	✓	✓	✓			
Relocation & Expansion of Factory, Petaling Jaya	Century Batteries (M) S/B	✓	✓	✓	✓			✓
L & M Headquarters at Glenmarie, Selangor	L & M Corporation	✓	✓	✓	✓			
Technical Operations Centre at Sungai Besi, Selangor	Binariang	✓	✓	✓	✓			✓
Regional Switching Station at Penang & Johor Bahru	Binariang	✓	✓	✓	✓			
High Rise Condominium at Sector R5C, Bandar Baru Wangsa Maju, Kuala Lumpur	Projek Genting Kelang S/B	✓	✓	✓	✓			
Bandar Tun Razak Development, Kuala Lumpur	Zellecco S/B	✓	✓	✓	✓			
Low Rise Condominium in Ipoh, Perak	PPC	✓	✓	✓	✓			
Old Putra Building at Saujana, Selangor	Peremba Development	✓	✓	✓	✓			

# PROJECT EXPERIENCE



## BUILDINGS

PROJECT DESCRIPTION	CLIENT																														
PROJECT DESCRIPTION	CLIENT																														
Mixed Development in Tawau, Sabah	Sin Heap Lee Corporation																														
Light Industrial Factories in Kajang, Selangor	Berkat Berhad																														
Condominium at Jalan Sultan Azlan, Ipoh, Perak	Emerald Domain																														
Condominium at Setapak, Kuala Lumpur	MBF																														
Commercial Development at Kajang, Selangor	Cuepacs																														

# PROJECT EXPERIENCE



## BRIDGES & TUNNELS

PROJECT DESCRIPTION	CLIENT	Topographic Surveys	Geotechnical Investigations	Traffic Management	Foundation/ Structure Design	Embankment Design	Services Relocation	Construction Supervision	Contracts & Documentation	Audit/ Design Review
Widening of 9 Bridges Along Kuala Lumpur - Seremban Expressway	PLUS	✓	✓	✓	✓	✓	✓	✓	✓	
Bridge at Sg. Besi Salak Highway, Kuala Lumpur	Metramac	✓	✓	✓	✓	✓	✓	✓	✓	
Bridge over Sg. Kerayong, Sg. Besi	Urus Bhd.	✓	✓		✓			✓	✓	✓
Proposed Privatisation of North Port to West Port Bridge, Port Klang	Shapadu Properties S/B									
Malaysia-Singapore 2nd Crossing, Johor	Lintasan Kedua (M) Bhd.								✓	✓
KTM Double Track Package A (Kuala Lumpur to Klang)	IRCON Sdn. Bhd.	✓	✓		✓			✓	✓	
KTM Double Track Package B (Rawang to Kajang))	IRCON Sdn. Bhd.	✓	✓		✓			✓	✓	
KTM Double Track Package C (Kajang to Seremban)	IRCON Sdn. Bhd.	✓	✓		✓			✓	✓	
Pasir Mas Bridge, Kelantan	Kedeco Sdn. Bhd.	✓	✓		✓	✓				
Proposed Bridge from Padang Lalang to Tanjung Lumpur, Kuantan	Gamuda Berhad				✓	✓				
Proposed Bridge from Ampang Pecah to Bukit Rasah Road, Hulu Selangor	JKR	✓	✓		✓					
Improvement to Federal Highway Route II, Batu Tiga Interchange	PLUS	✓	✓		✓					
Independent Check on Sg. Dinding Bridge, Lumut Perak	Konsortium Panzana, Lankhousa		✓							✓
LRT System II for Kuala Lumpur from University to Pasar Seni	PUTRA Berhad	✓	✓	✓	✓	✓	✓	✓	✓	
Upgrading Lojing to Pos Blau Road, Kelantan	JKR	✓	✓	✓	✓		✓	✓	✓	

## WORKSCOPE

# PROJECT EXPERIENCE



## BRIDGES & TUNNELS

PROJECT DESCRIPTION	CLIENT	Topographic Surveys	Geotechnical Investigations	Traffic Management	Foundation/ Structure Design	Embankment Design	Services Relocation	Construction Supervision	Contracts & Documentation	Audit/ Design Review
West Coast Highway, Taiping to Banting	Konsortium LPB Sdn. Bhd	✓	✓	✓	✓	✓	✓	✓	✓	✓
North South Central Link Expressway Package 2C	ELITE Berhad	✓	✓	✓	✓	✓	✓	✓	✓	✓
North South Central Link Expressway Package 3	ELITE Berhad	✓	✓	✓	✓	✓	✓	✓	✓	✓
Central Terminal Area Bridge, KLIA	EKOVEST Berhad	✓	✓	✓	✓	✓	✓	✓		
Connaught Bridge Across Klang River, Klang	JKR	✓	✓	✓	✓		✓	✓	✓	
Rail Link to Tanjung Pelepas Port, Johor	PTP Management	✓	✓	✓			✓		✓	
Express Rail Link to KLIA	ERL Sdn. Bhd								✓	✓
Elevated Guideway Structure for LRT System 2, Subang to Gombak	Putra Bhd.	✓	✓		✓	✓	✓	✓	✓	✓
Ramlee Ramps & Connecting Tunnel to KLCC, Kuala Lumpur	Fujita Bridgecon JV	✓	✓		✓	✓		✓	✓	
KLCC Pedestrian Tunnel Across Jln Ampang, Kuala Lumpur	Fujita Corporation (M) Sdn. Bhd	✓	✓		✓	✓		✓	✓	
Feasibility Study of Penang Second Crossing	HPU	✓	✓		✓					
Widening of Existing Penang Bridge	PBSB	✓	✓	✓	✓	✓	✓		✓	

## WORKSCOPE

## PORTS & AIRPORTS

PROJECT DESCRIPTION	CLIENT	Master Planning	Site Investigation & Survey	Design	Tender & Contract Document	Supervision	Economic Appraisal
Kang Keng Airport, Cambodia	Ariston		✓	✓	✓	✓	
Extension and Renovation of Langkawi Airport, Kedah	Akitek Jururancang Malaysia		✓	✓	✓	✓	
Kuala Lumpur International Airport, Sepang, Selangor	KLIA Berhad	✓	✓	✓	✓	✓	
Proposed Port Klang Distripark, Port Klang	LPK Distribution Park		✓	✓	✓	✓	
East Wharf Extension, Pasir Gudang, Johor	Sime Sembawang		✓	✓	✓	✓	
Dry Bulk Wharf and cargo Handling Facilities, Port Klang	Lembaga Pelabuhan Kelang		✓	✓	✓	✓	
Upgrading of Slipway No. 4, Klang Port Management, Dockyard	Kelang Port Maritime		✓	✓	✓	✓	
Lumut Port Industrial Park, Melaka	Lumut Maritime Terminal	✓					
Melaka Port and Industrial Park, Melaka	Nortek Sdn Bhd	✓	✓	✓			✓
Extension of Container yard, Port Klang	Kelang Port Container Terminal		✓	✓	✓	✓	
Design Review and Load Assessment of Marine Structures at Sandakan, Tawau, Tanjung Batu, Lahad Datu, Kota Kinabalu, Kudat, Kunat and Sepanggar Wharf/Jetty, Sabah	Sabah Port Authority		✓	✓	✓	✓	
Proposed West Port Development, Pulau Lumut, Port Klang	Kelang Multi Terminal Sdn. Bhd.	✓	✓	✓	✓	✓	✓
Proposed Inland Port, Pahang	UPEN, Pahang						✓
Dry Bulk & Container Berth, West Port, Pulau Lumut, Port Klang	Lembaga Pelabuhan Klang		✓	✓	✓	✓	
Tanjung Pelepas Master Plan Review, Johore	PTP Sdn Bhd.	✓					





# PROJECT EXPERIENCE



## TRANSPORTATION

### PROJECT DESCRIPTION

### CLIENT

WORKSCOPE	Geotechnical Investigation	Traffic Management	Rehabilitation & Widening	Conceptual/Preliminary	Detailed Design	Services Relocation	Transport Economics	Construction Supervision	Contracts & Documentation	Consultants/Project Management
Pavement Condition Assessment	✓									✓
Dedicated Highway, Bulatan Kampung Pandan to Putrajaya & KLIA, Sepang	✓		✓		✓					
Damansara Transit Road, Jalan Damansara-Jalan Duta Interchange to Jalan Sultan Ismail, KL	✓		✓	✓	✓			✓	✓	
Projek Laluan Kota Kinabalu-Sulaman, Sabah	✓		✓	✓	✓			✓	✓	
KLCC Tunnel Project, Jalan P. Ramlee, Kuala Lumpur	✓		✓		✓			✓	✓	
Realignment for ERL crossing on NSE Central Link	✓				✓			✓	✓	
Proposed Interchanges at Junction : (i) Puchong Rd - Bkt Lanchong, Puchong Rd - Hypermarket, Puchong (ii)	✓	✓		✓	✓			✓	✓	
Elevated Federal Expressway, Subang to Jalan Istana	✓			✓			✓			
Bkt. Unggul Golf & Country Resort Interchange, Bangi Selangor	✓			✓	✓				✓	
West Coast Highway, Taiping to Banting	✓			✓						
Lojing to Pos Blau Highway, Kelantan	✓			✓				✓	✓	
Napheng-Longxan Highway, Laos				✓						
Beihai Expressway, China				✓						
North South Expressway-Central Link & KLIA Expressway	✓			✓	✓			✓	✓	
Cameron Highlands Highway, Package 2A, 2B & 2B2m, Pahang	✓		✓	✓	✓				✓	
KTM Interchange(Package7), Sg. Buloh & Jalan Templer, Segambut & Kuang, Selangor	✓	✓		✓	✓			✓	✓	
Changkat Jering to Taiping Expressway, Perak	✓	✓	✓	✓	✓			✓	✓	



## WATER RESOURCES

PROJECT DESCRIPTION	CLIENT	Water Supply & Treatment	Sewerage & Sewerage Treatment	Drainage, Irrigation & Flood Mitigation
Bandar Baru Kerteh Phase II, Terengganu	Terengganu SEDC Peremba	✓	✓	✓
Lumut Industrial Park, Perak	LMT Sdn. Bhd.	✓	✓	✓
Structure Plan for Pahang Districts (Bera, Maran, Temerloh & Jerantut)	Rekarancang	✓	✓	✓
Tanah Merah Estate Development, Port Dickson, Negeri Sembilan	Akitek Jururancang Guthrie	✓	✓	✓
Local Plan for Rantau Panjang, Kelantan	J.P.B.D Cawangan Timur	✓	✓	✓
Drainage Master Plan Study for Kota Tinggi, Johor	Jabatan Pengairan & Saliran			✓
Kuala Lumpur Sentral Station, Brickfields	MRCB	✓	✓	✓
Master Plan for Bandar Baru Salak Tinggi, Selangor	Jabatan Perancang Bandar & Desa	✓	✓	✓
Bukit Raja Township Development	Prominent Acres Sdn.Bhd	✓	✓	✓
Proposed Refurbishment Works of Pantai STW	Indah Water Konsortium		✓	
Proposed Desludging Works For Pantai STW	Indah Water Konsortium		✓	
Selangor Infrastructure Masterplan Study	SUK,Selangor			✓
Putrajaya Development of Precinct 11, Putrajaya	Paremba Holdings Sdn. Bhd	✓	✓	
Proposed Mix Development at Lot 21008, Mkm. Ampangan, Seremban	Tropical Terrain Sdn.Bhd	✓	✓	
Teluk Gong Power Plant at Teluk Gong,Melaka	Panglima Power Sdn.Bhd	✓	✓	

## WATER RESOURCES

PROJECT DESCRIPTION	CLIENT	Water Supply & Treatment	Sewerage & Sewerage Treatment	Drainage, Irrigation & Flood Mitigation
Bandar Baru Kerteh Phase II, Terengganu	Peremba Dev.Sdn.Bhd	✓	✓	
Kolej Matrikulasi,Banting,Selangor	Maju Holding Bhd.	✓	✓	
Komplek Hang Tuah,Melaka	MARA	✓	✓	
University Teknologi Petronas,Tronoh, Perak	KLCC Bhd.	✓	✓	✓
West Port Development, Klang	Klang Multi Terminal Sdn.Bhd.	✓	✓	
Port Dickson Local Plan Study, N.Sembilan	JPBD Selatan			✓
Kajang Local Plan Study,Selangor	Rekaranjang S.B/ JPBD S'gor			✓
Nilai New TownShip, Nilai	BBN Dev.Sdn.Bhd	✓	✓	
Kuala Lumpur Sentral, K.Lumpur	MRCB	✓		✓
Lumut Port Industrial Park, Setiawan, Perak	LMT Sdn.Bhd	✓		✓
Bernam Valley Development Plan, Selangor	Rekaranjang S.B/ JPBD S'gor	✓		✓
Damansara Sewage Catchment Study, Selangor	IWK			✓
Privatisation of national Sewerage System	IWK			✓
Temerluh,Maran,Bera and Jerantut Structure Plan Study	Rekaranjang S.B/ JPBD S'gor			✓
Hospital Selayang, Selangor	Obayashi Corporation	✓	✓	

## WATER RESOURCES

PROJECT DESCRIPTION	CLIENT	Water Supply & Treatment	Sewerage & Sewerage Treatment	Drainage, Irrigation & Flood Mitigation
Cold room store at pasar Borong Selayang, K.Lumpur	PPC Sdn.Bhd	✓		
Kang keng International Airport, Cambodia	Ariston	✓	✓	
Selbourne Square, Shah Alam, Selangor	MRCB	✓		
Langkawi International Airport	Akitek Jururancang Malaysia	✓	✓	
TG. Pelepas KTMB Station at Senai, Johor	KTMB	✓	✓	
Bandar Seri Permaisuri, Cheras K.Lumpur	PPC-Glomac	✓		✓
IKM Rembau, N.Sembilan	MARA	✓	✓	

B1 (1-4) Block B Plaza Dwitasik  
No 21, Jalan 5/106, Bandar Sri Permaisuri,  
56100 Kuala Lumpur.. Malaysia  
Tel : 603-91730355 Fax : 603-91730939  
E-mail : heb@hss.com.my

