

# COMPANY PROFILE

## HSS Engineers Berhad



**ENGINEERS**

Malaysia's Engineering DNA

[www.hssgroup.com.my](http://www.hssgroup.com.my)

# CONTENTS

	<i>Pg.</i>
1. HSS Engineers Berhad (HEB)	3 - 4
2. HEB Structure	5
3. Awards and Accolades	6 - 7
4. HSS Engineering Sdn. Bhd. (HSSE)	8
5. SMHB Engineering Sdn. Bhd.	9
6. BIM Global Ventures Sdn. Bhd. (BGV)	10
7. HSS BIM Solutions Pvt. Ltd. (HBS)	11
8. SMHB Environmental Sdn. Bhd.	12
9. HSS Integrated Sdn. Bhd. (HSSI)	13
10. HSS Mekanikal & Elektrikal Sdn. Bhd. (HSS M&E)	14
11. SMHB Sdn. Bhd.	15
12. Mission Statement	16
13. Quality, Environmental and Safety & Health (QESH) Policy	17
14. Project Experience	18 - 50
• Highway	• River Rehabilitation & Flood Mitigation
• Railway	• Dams
• Port	• Water Supply / Resources & Treatment
• Airport	• Drainage & Irrigation
• Bridge	• Waste Management
• Building	• Environment
• Township	• Building Information Modeling
• M&E	• International Experience
• Power Plant / Petrochemical Plant	



# HSS Engineers Berhad (HEB)



HSS Engineers Berhad (“HEB”), listed on the Main Market of Bursa Malaysia Securities Berhad, is the country’s first listed entity providing engineering consultancy and project management services. HEB was listed on the ACE Market in 2016 and subsequently migrated to the Main Market in September 2017.

Incorporated in 2015, HEB through its subsidiaries and associate companies, is involved in the provision of engineering and project management services including Planning, Engineering Studies,

Engineering Design, Construction Supervision, Project Management and Building Information Modeling (BIM) Services. HEB, had on 28 March 2018, completed the acquisition of SMHB Engineering Sdn Bhd (SMHB) which provides engineering services and project management consultancy specialising particularly in the water sector.

## HEB Group comprises the following companies:

- HSS Engineers Berhad
- HSS Engineering Sdn. Bhd.
- SMHB Engineering Sdn Bhd.
- BIM Global Ventures Sdn. Bhd.
- HSS BIM Solutions Pvt. Ltd. (incorporated in India)
- SMHB Environmental Sdn. Bhd.

## Our associated companies held through HSS Engineering Sdn. Bhd. are as follows:

- HSS Integrated Sdn. Bhd.
- HSS Mekanikal & Elektrikal Sdn. Bhd.

## The associated company held through SMHB Engineering Sdn. Bhd. is as follows:

- SMHB Sdn. Bhd.

The Group has a total workforce of more than 1000 staff, of which more than half are engineers of various disciplines. The Group has extensive experience and an established reputation in a wide array of sectors including urban infrastructure, roads and highways, railways and metro systems, building and structures, transportation planning, power generation, and water resources management and supply.



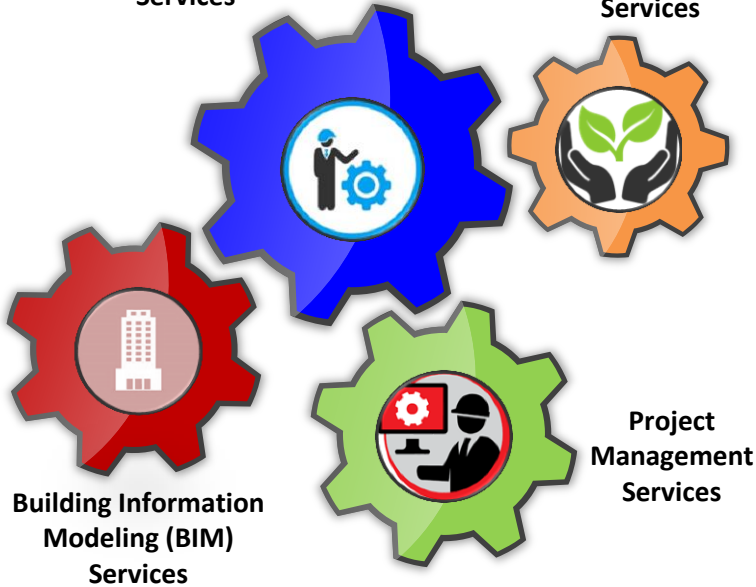
# HSS Engineers Berhad (HEB)

## DELIVERING VALUE

**Our Communities, Clients and Shareholders**

Engineering Design and  
Construction Supervision  
Services

Environmental  
Services



## OUR OFFICES



- HSS Engineers Berhad  
*Kuala Lumpur, Malaysia*
- SMHB Sdn. Bhd.  
*Kuala Lumpur, Malaysia*
- Penang, Malaysia
- HSS BIM Solutions Pvt. Ltd.  
*Chennai, India*

**HSS has the experience of providing engineering consultancy to the development of...**



More than **4,000 km** of roads/highways and expressways



Ports with more than **9.95million TEUs** of cargo handling capacity



Airports with passenger handling capacity of more than  
**107 million/year**



Over **3,000 km** track length of railways (Heavy Rail/Transit Systems)



Water resources facilities with capacity of processing **200 mld** of water

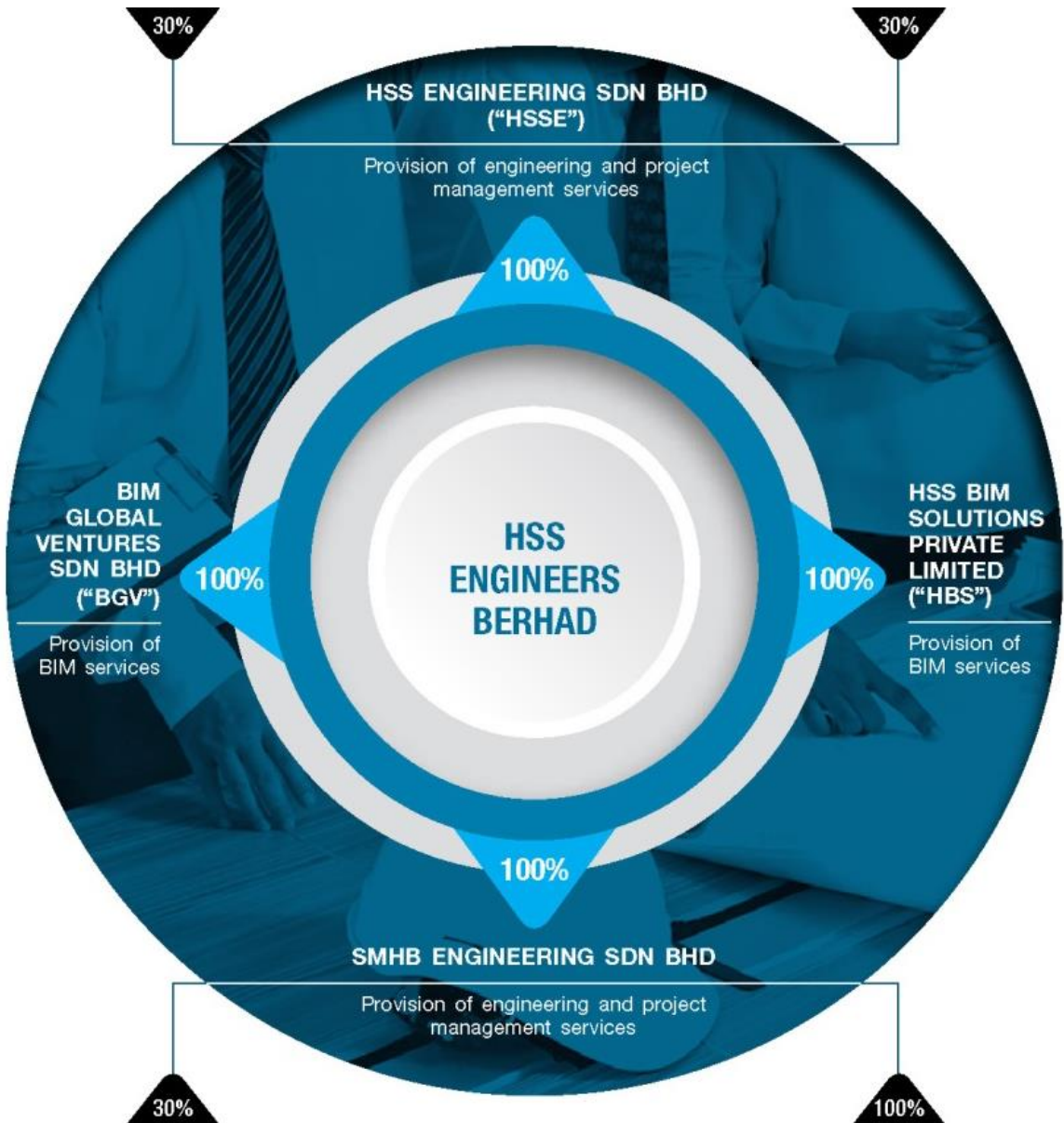
# Corporate Structure

## HSS INTEGRATED SDN BHD (“HSSI”)

Provision of civil, structural, mechanical and electrical engineering consultancy services

## HSS MEKANIKAL & ELEKTRIKAL SDN BHD (“HSSME”)

Provision of mechanical and electrical engineering consultancy services



## SMHB SDN BHD (“SMHB”)

Provision of engineering consultancy specialising in the water sector

## SMHB ENVIRONMENTAL SDN BHD

Provision of environmental consultancy services

# Awards and Accolades



**2019**

**CHIT International Project Award 2019 (Winner)**  
Ampang Light Rapid Transit Extension Project (AMG LEP)

**2016**

**7th Middle East Business Leader Awards**  
Leadership Excellence in Engineering



**2015**

**Sime Darby Property**  
HSS Integrated Sdn Bhd  
5 Star rating in the Safety and Health Assessment System in Construction (SHASSIC)



**2015**

**Asia Pacific CSR Awards**  
Master Class in Labour Standard



**2015**

**CIDB Malaysia National BIM Day Recognition Award**

**2015**

**Sin Chew Business Excellence Awards**  
Product and Services Excellence Award



# Awards and Accolades

**2013**

**Association of Consulting Engineers Malaysia (ACEM)**

- Engineering Award 2013
- Silver Award of Merit



**2008**

**Association of Consulting Engineers Malaysia (ACEM)**

- Engineering Award 2008
- Silver Award of Merit

**2003**

**New Dimensions in Bridges**

Highly Commendable Paper Award



**2001**

**Muhibbah Engineering (M) Bhd**

Appreciation Award

**1998**

**Putra LRT**

Recognition Award



## HSS Engineering Sdn. Bhd. (HSSE)

HSSE has, since its establishment in 2001, collaborated with HSSI and subsequently in 2004, with HSSME. Under a teaming collaboration, HSSI and HSSME exclusively engage HSSE for the purpose of executing and completing projects awarded to HSSI and HSSME for the provision of engineering and project management services. HSSE is also accredited with the ISO 9001:2015, ISO 14001:2015 and OHSAS 18001:2007 certification.



HSSE is able to draw on this resources and is well placed to handle projects of varying magnitudes and has played an integral role in the success of many of Malaysia's major infrastructure and landmark projects from various industries/sectors, including railways, highways, ports, airports, townships, water resources, telecommunications and energy.



# SMHB Engineering Sdn. Bhd.

---

SMHB Engineering, established in 1988, is principally involved in the provision of engineering and project management services. Founded on the wealth of knowledge and experience accumulated over the many years of service, the company's team of professionals provide specialized capabilities in all disciplines of engineering.

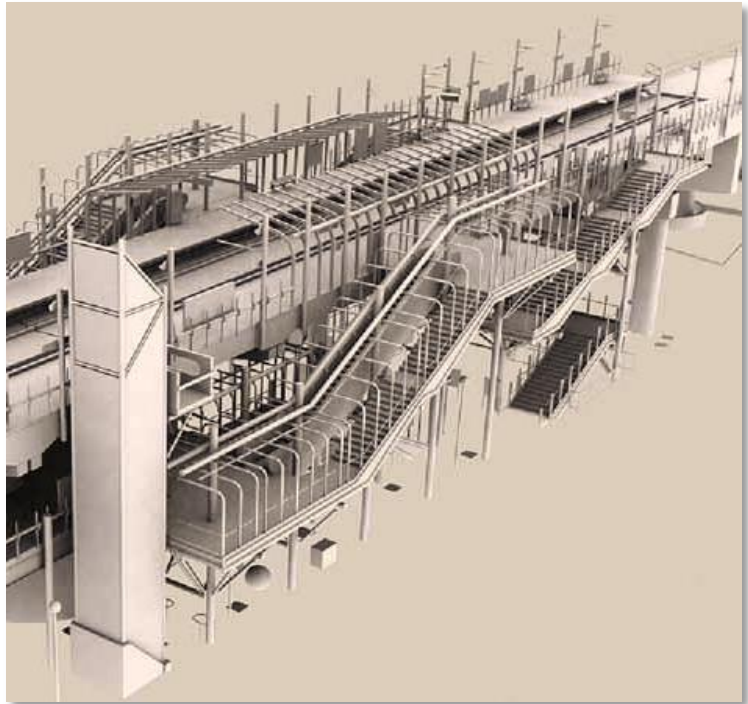


In collaboration with SMHB Sdn Bhd and SMHB Environmental, SMHB Engineering caters to both the local and overseas market.

SMHB Engineering is certified and operates within the ISO 9001: 2015 Quality Management System.

# BIM Global Ventures Sdn. Bhd. (BGV)

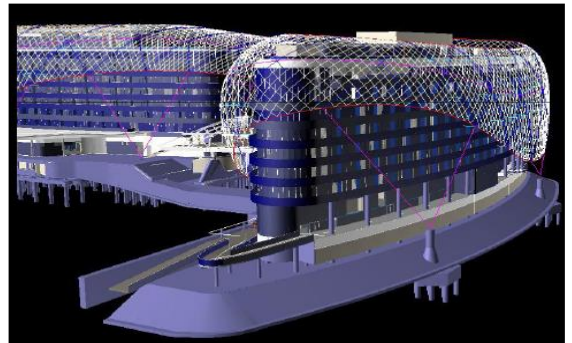
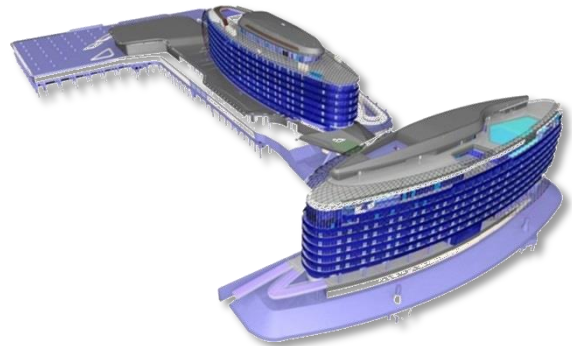
BGV, was established in July 2012 to further strengthen the Group's capabilities through the adoption of Building Information Modelling ("BIM"). As the Group's BIM arm for the Malaysian market, BGV provides BIM services for Malaysian based projects. BIM involves the generation and management of digital representations of physical and functional characteristics of places which can be exchanged or networked to support decision making. The adoption of BIM services extend beyond planning and design phase of a project, extending throughout the building life cycle, supporting processes, including cost management, construction management, project management and facility operation.



BGV is an Authorised Autodesk Training Centre & Authorised Certification Centre providing various BIM training solutions. It is also registered with Building Smart International an international, alliance for interoperability, which focuses where it's focus is on increasing productivity, improving quality, enhancing predictability and saving resources (money, time and materials) in every phase of a facility's life cycle.



HBS, was established to further support and strengthen BGV's capabilities and to provide BIM services in the international market. HBS has a staff strength of 100 engineers, including modelers. Since its establishment, HBS has provided BIM services to projects of various scales in the Middle East, India, Australia and Singapore.



# SMHB Environmental Sdn. Bhd.

SMHB Environmental, established in 1993, is principally involved in the provision of environmental consultancy services.

The company has 25 years of experience in carrying out environmental scoping, environmental impact assessments, pollution control and effluent impact studies, environmental management plans and environmental monitoring/audit of various types of development projects.



SMHB Environmental is certified and operates within the ISO 9001:2015 Quality Management System.



## HSS Integrated Sdn. Bhd. (HSSI)

With a proud history spanning almost 30 years, HSSI has continued to play a pivotal role in many Malaysia's notable development projects. HSSI is registered with the Ministry Malaysia of Finance and is accredited with the ISO 9001:2015, ISO 14001:2015 and OHSAS 18001:2007 certification. HSSI is also part of the Teras programme under Teraju (Prime Minister's Department) targeted to mentor and grow high performing Bumiputera companies.



HSSI's expertise includes project management, master planning, preliminary and detailed engineering design, construction supervision, contract administration, feasibility studies for major infrastructure projects in South Asia , South East Asia and Middle East & North Africa (MENA).

# HSS Mekanikal & Elektrikal Sdn. Bhd. (HSS M&E)



HSSM&E established in 2004, registered with the Malaysian Registration of Engineers Act 1967 (under the Mechanical and Electrical category) and with the Ministry of Finance. HSSM&E is accredited with ISO 9001:2015, ISO 14001:2015 and OHSAS 18001:2007

The staff have been the main binding factor of our company's growth. Through shared group synergy and requisite knowledge, HSSM&E has the ability to efficiently complete projects on schedule and within budget.

Our specialisation lies within all building services as well as the full range of infrastructure works including power plants and ports.

HSSM&E ensure its services are always at the forefront of world trends to provide safe, innovative, reliable, efficient and cost effective engineering designs to clients. Its QESH certification reinforces this commitment.



# SMHB Sdn. Bhd.

SMHB Sdn Bhd, established in 1980 but with a history that dates back to 1962, is registered with Treasury and the Board of Engineers Malaysia as an engineering consultancy practice under the disciplines of Civil, Structural, Mechanical and Electrical.

SMHB has more than 57 years of extensive experience as engineering consultants in the sectors of water resources and water supply schemes, dams, barrages and off-river storages, wastewater and solid waste collection and treatment, drainage and irrigation, flood mitigation, rail, roads, highways, bridges, infrastructure, district cooling systems, building services and hydropower.



The fundamental goal of the company is towards total commitment and partnership with clients to deliver solutions that are not only value-added, but technically, socially and environmentally sustainable.

SMHB is certified and operates within the ISO 9001: 2015 Quality Management System.



## Mission Statement

---

***“To be recognized as Malaysia’s premier engineering consultant, as reflected in our outstanding contribution to the development of the nations infrastructure; and retain this position through excellent services and superior technical quality, innovation and performance”***





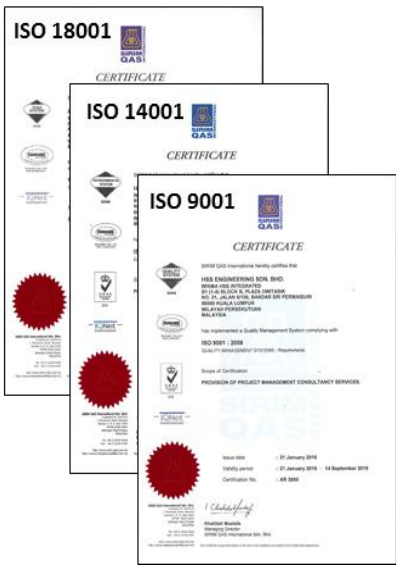
# Quality, Environmental And Safety & Health (QESH) Policy

The management of HEB Group is dedicated and committed to:

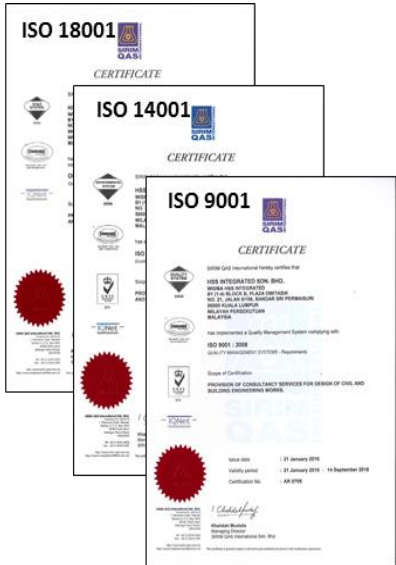
- Executing consultancy services in a manner which demonstrates integrity, competency and reliability
- Providing excellent services through effective QESH Management System and continued improvement in ensuring our services meet customers' satisfaction
- Providing a reasonable and practical step to preventing and eliminating the risks of ill health, injuries and damage to the environment in all its operations
- Complying with applicable legal requirements and other statutory requirements
- Implementing, controlling and maintaining an efficient QESH Management System.

The Management is committed to ensure that all staff understand the QESH Policy and the QESH Management System is maintained to reflect current and changing professional requirements and work practices.

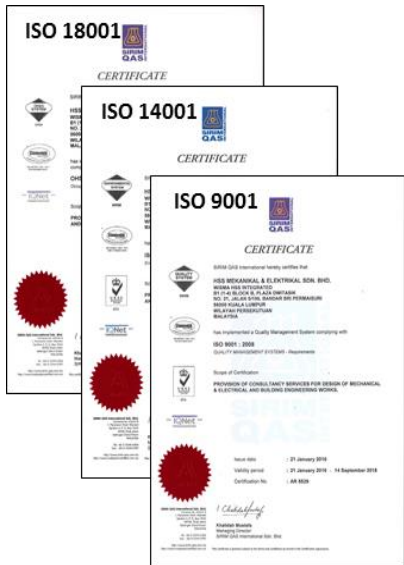
## HSS Engineering Sdn Bhd



## HSS Integrated Sdn Bhd



## HSS Mekanikal & Elektrikal Sdn Bhd



## SMHB Engineering Sdn. Bhd.



## SMHB Environmental Sdn. Bhd



## SMHB Sdn. Bhd.

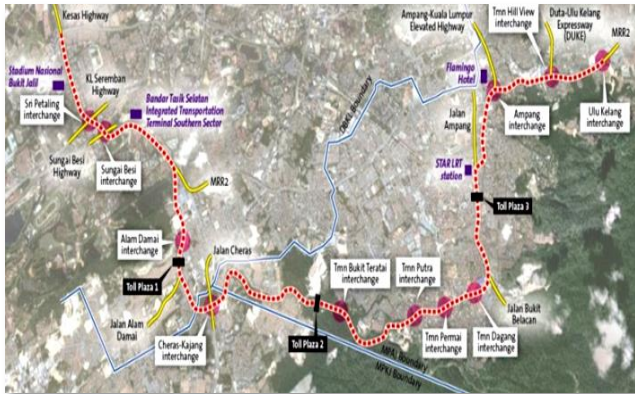


## Notable Projects

---

*The following list of projects are several of our many project experiences. For the full listing of our experience, please log on to our website at [www.hssgroup.com.my](http://www.hssgroup.com.my).*





## Sg. Besi - Ulu Kelang (SUKE) Elevated Expressway

**Services:** Project Management Consultancy & Detail Design

**Client:** *Projek Lintasan Kota Holdings Sdn Bhd.*



## Maju Expressway

**Services:** Project Management, Detailed Design & Construction Supervision

**Client:** *Maju Holdings Sdn Bhd*



## Kuala Lumpur - Kuala Selangor Expressway

**Services:** Project Management Consultancy

**Client:** *KL-Kuala Selangor Expressway Sdn Bhd.*



## Implementation of 3 Major Roads & Undersea Third Link Tunnel, Penang

**Services:** ICE & Engineering Design

**Client:** *Unit Perancang Ekonomi Negeri (UPEN) Penang*



## South Klang Valley Expressway (SKVE)

**Services:** Project Management Consultancy

**Client:** *SKVE Holdings Sdn Bhd*



## Fourth Lane Widening, Kuala Lumpur – Seremban

**Services:** Detailed Engineering Design

**Client:** *PLUS Expressway Berhad*



## West Coast Expressway

**Services:** Detailed Design

**Client:** *West Coast Expressway Sdn Bhd*



## North-South Expressway Central Link

**Services:** Engineering Consultancy Services

**Client:** *Expressway Lingkaran Tengah Sdn Bhd*



## Duta Ulu Klang Expressway (DUKE)

**Services:** Preliminary & Detailed Engineering Design and Construction Supervision

**Client:** *Ekovest Construction Sdn Bhd*



## East Klang Valley Expressway (EKVE) Sdn Bhd.

**Services:** Independent Check Consultant

**Client:** *East Klang Valley Expressway Sdn. Bhd.*



## Lojing to Pos Blau Road

**Services:** Detailed Engineering Design & Construction Supervision

**Client:** *Public Works Department (JKR) Government of Malaysia*



## Kuala Lumpur Middle Ring Road Package 9, Kuala Lumpur

**Services:** Detailed design and construction supervision

**Client:** *Jabatan Kerja Raya Malaysia*





## Interchanges along Johor Bahru Inner Ring Road for Iskandar Malaysia, Johor –Package 3A and 3B

**Services:** Detailed design and construction supervision

**Client:** *Iskandar Regional Development Authority (IRDA)*



## Gerbang Selatan Bersepadu Project, Johor – CIQ Complex Road Network

**Services:** Detailed design and construction supervision

**Client:** *Gerbang Perdana Sdn Bhd*



## Jalan Cheras/Phoenix Plaza Interchange, Cheras, Kuala Lumpur

**Services:** Detailed design and construction supervision

**Client:** *Dewan Bandaraya Kuala Lumpur*



## Kajang Traffic Dispersal Ring Road Section 2 (SILK), Selangor, Malaysia

**Services:** Detailed design and construction supervision

**Client:** *Sunway Construction Berhad/Sistem Lingkaran Lebuhraya Kajang Sdn Bhd (SILK)*



## East Coast Rail Link (ECRL) Project

**Services:** *Scheme Detailed Design & Construction Supervision*

**Client:** *China Communications Construction Company (M) Sdn Bhd (CCCC)*



## Kuala Lumpur – Singapore High Speed Rail Project

**Services:** *Reference Design Consultant 05 (RDC 05)*

**Client:** *MyHSR Corporation Sdn Bhd*



## Klang Valley MRT (Line 1), Sg. Buloh to Kajang

**Services:** *Independent Consultant Engineer*

**Client:** *Mass Transit Corporation S/B*



## Klang Valley MRT (Line 2), Sg. Buloh to Putrajaya

**Services:** *Independent Consultant Engineer*

**Client:** *Mass Transit Corporation S/B*



## Projek Mass Rapid Transit (MRT) Lembah Kelang-Jajaran Sg. Buloh – Kajang

**Services:** Detailed design and Construction Supervision civil and M&E works

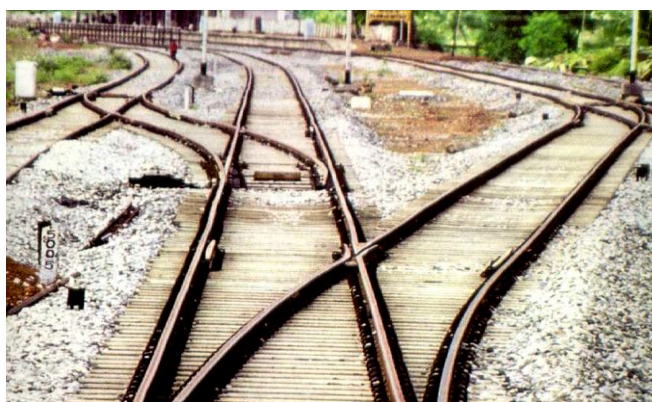
**Client:** *MMC Gamuda KVMRT (PDP) Sdn Bhd*



## East Coast Rail Route

**Services:** Feasibility Study

**Client:** *East Coast Economic Region Dev Council (EDERDC)*



## Electrified Double Tracking Gemas to Kluang

**Services:** Detailed Design Engineering

**Client:** *Gamuda Engineering Sdn Bhd*



## Rail Link to Tanjung Pelepas

**Services:** Detail Design & Construction Supervision

**Client:** *Ircon International Pvt. Ltd.*





## Electrified Double Tracking, Rawang to Ipoh

**Services:** Project Management Consultancy

**Client:** DRB-HICOM



## Electrified Double Tracking, Seremban to Johor

**Services:** Preliminary Engineering Design

**Client:** Ministry of Transport



## Electrified Double Tracking, Ipoh to Padang Besar

**Services:** Detailed Design & Consultancy Services

**Client:** MMC – GAMUDA JV.



## Structural Assessment & Conditioning Monitoring for Kelana Jaya Line

**Services:** Engineering Design & Construction Supervision

**Client:** Prasarana Malaysia Berhad



## Ampang (AMG) Line Extension Project

**Services:** Detailed Design & Construction Supervision

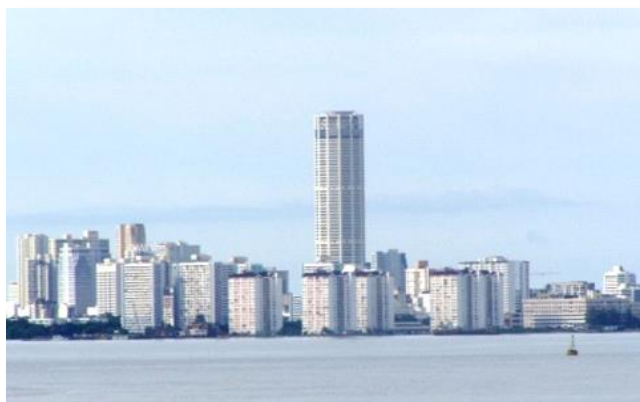
**Client:** *Prasarana Malaysia Berhad*



## LRT System 2, Subang to Gombak

**Services:** Detail Design & Construction Supervision

**Client:** *Putra Bhd*



## Penang LRT/ Monorail System

**Services:** Feasibility Study

**Client:** *Penang Port Sdn Bhd*



## Express Rail Link (ERL)

**Services:** Technical Support & Project Management

**Client:** *Express Rail Link (ERL) Sdn Bhd*



## Westport Development, Selangor

**Services:** Overall Master Plan

**Client:** *Westports Bhd*



## Kuantan Port Expansion, Pahang

**Services:** Detailed Design & Construction Supervision

**Client:** *Roadbuilders – Pasdec JV Kuantan Port Consortium*



## Melaka Port & Industrial Development

**Services:** Feasibility Study & Overall Master Plan

**Client:** *Nortek Sdn Bhd*



## Lumut Port Industrial Park, Perak

**Services:** Master Plan

**Client:** *Lumut Maritime Terminal Sdn Bhd*



## KLIA 2

**Services:** Preliminary Design, Detail Design & Construction Supervision

**Client :** *Malaysia Airports Holdings Berhad*



## Kuala Lumpur International Airport (KLIA)

**Services:** Detailed Design & Master Plan Study

**Client:** *K L International Airport Berhad*



## Langkawi International Airport

**Services:** Coordination & Inspection

**Client:** *Akitek Jururancang Malaysia*



## Kang Keng Airport, Cambodia

**Services:** Preliminary and Detailed Design

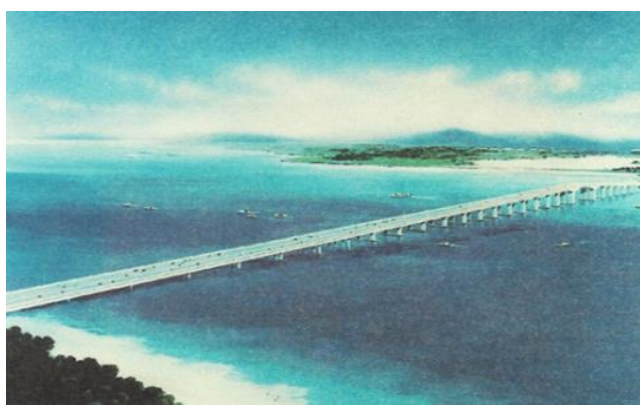
**Client:** *Ariston Sdn Bhd*



## Penang Bridge Widening

**Services:** Preliminary Engineering Study & Detailed Design

**Client:** *Penang Bridge Sdn Bhd*



## Malaysia Singapore 2nd Crossing

**Services:** Detailed Engineering Design Check

**Client:** *Lintasan Kedua (M) Bhd*



## Bridge Crossing Sg. Pulai & Link Road from Tanjung Pelepas, Johor

**Services:** Design, Site Supervision & Project Management

**Client:** *Seaport Worldwide Sdn Bhd*



## Padang Lalang to Tanjung Lumpur, Kuantan

**Services:** Independent Checking Engineer

**Client:** *Gamuda Sdn Bhd*



## KL Sports City, Kuala Lumpur

**Services:** Detailed Design & Construction Supervision

**Client:** *Rukun Juang Sdn Bhd*



## Mixed Development Petaling Jaya (MYIPO – Tower 6), Selangor

**Services:** Civil & Structure Detailed Design

**Client:** *PJ Sentral Development Sdn Bhd*



## Proposed Rehabilitation Centre in Ayer Keroh, Melaka

**Services:** Detailed design for both C&S and M&E works and Construction Supervision

**Client:** *Pertubuhan Keselamatan Sosial (PERKESO)*



## Construction of a New Ikea Store, Kuala Lumpur

**Services:** Project Management Consultancy Services

**Client:** *Ikano Retail Asia (IKANO Pte Ltd Malaysia)*



## Bukit Raja - Integrated Township, Selangor

**Services:** Preliminary Engineering Study & Detailed Design

**Client:** *Sime Darby USJ Development Sdn Bhd*



## Kwasa Damansara Township Development, Selangor

**Services:** Project Management Consultancy and BIM Execution

**Client:** *Kwasa Land Sdn Bhd*



## Sri Permaisuri Township Development, Kuala Lumpur

**Services:** Master plan, Detailed Design & Construction Supervision

**Client:** *PPC Glomac Sdn Bhd*



## Bukit Bintang City Centre, Kuala Lumpur

**Services:** Master plan, C&S & M&E Consultancy Services

**Client:** *BBC Development*



**Pembangunan Perumahan dan Perdagangan di Mukim Beranang, Daerah Hulu Langat, Selangor**

**Services:** M&E Engineering Consultancy Services

**Client:** *ECO – Majestic Sdn Bhd*



**Proposed New Building Boarding School, Alor Gajah, Melaka**

**Services:** M&E Engineering Consultancy Services

**Client:** *Kementerian Pendidikan Malaysia*



**Proposed Construction of Warehouse and Office Building for Big Dutchman**

**Services:** M&E Engineering Consultancy Services

**Client:** *NWKA Architects Sdn. Bhd.*



**M&E Design Service for Goroka Provincial Hospital, Diagnostic and Surgical Center, Papua New Guinea**

**Services:** M&E Engineering Consultancy Services

**Client:** *Vamed Engineering (M) Sdn Bhd*



# Power Plant / Petrochemical Plant



**Balance of Plant (BOP) for the 1000MW Coal Fire Power Plant Extension, Perak**

**Services:** Detailed Design for Civil, Structural, M&E

**Client:** *Mudajaya Corporation Berhad*



**Panglima CCGT Power Plant, Teluk Gong, Melaka**

**Services:** Detailed Design

**Client:** *Zelan Construction Sdn. Bhd*



**Refinery & Petrochemical Complex (Rapid) Project, Pengerang, Johor**

**Services:** Engineering Design & Construction Supervision

**Client:** *UEMB-PROPEL Consortium*



**Manjung Power Plant, Manjung, Perak**

**Services:** Engineering Design & Construction Supervision

**Client:** *Janamanjung Sdn. Bhd.*

# River Rehabilitation & Flood Mitigation



## Sg. Muar Flood Mitigation Works, Johor

**Services:** Master Plan and Detailed Design

**Client:** *Department of Irrigation & Drainage Malaysia*



## Lemal & Rantau Panjang Flood Protection Scheme, Kelantan

**Services:** Detailed Design & Flood Mitigation Works

**Client:** *Department of Irrigation & Drainage, Government of Malaysia*



## Kinta River & Catchment Area, Perak

**Services:** Flood Mitigation & Rehabilitation Works

**Client:** *Department of Irrigation and Drainage, Malaysia*



## Kota Tinggi – River Protection & Landscaping, Johor

**Services:** Detailed Design & Landscaping Works

**Client:** *Department of Irrigation and Drainage, Malaysia*

# River Rehabilitation & Flood Mitigation



## Study and Design for the Rehabilitation of Sg. Linggi, Negeri Sembilan

**Services:** Review, investigation, modelling, study and recommendations for river rehabilitation and detailed design

**Client:** *Jabatan Pengairan dan Saliran, Negeri Sembilan*



## Melaka River Rehabilitation and Beautification Project, Melaka Phase 3

**Services:** Hydraulics and environmental studies for Sg. Melaka tidal barrage

**Client:** *Pembinaan Kaleigh Sdn Bhd – Pesona Metro Sdn Bhd JV*



## Melaka River Rehabilitation and Beautification Project Phase 1, Melaka

**Services:** Hydrologic and hydraulic modelling, EIA, detailed design and construction supervision

**Client:** *Pembinaan Kaleigh Sdn Bhd – Pesona Metro Sdn Bhd JV*



## Alor Setar Flood Mitigation Scheme – Phase I and II, Kedah

**Services:** Detailed engineering design and construction supervision

**Client:** *Jabatan Pengairan dan Saliran, Kedah*



## Seluyut Dam for RAPID (PAMER), Pengerang, Johor

**Services:** Study and Preliminary Engineering Design, Site Investigation, Detailed EIA, Detailed Engineering Design, and Construction Supervision

**Client:** *Petroleum Nasional Berhad Refinery and Petrochemicals Integrated Development (RAPID)*



## Alternative Water Supply to KLIA – Sg. Labu Off-river Storage Dam and Associated Works

**Services:** Feasibility study, detailed design, PMC, construction supervision

**Client:** *Jabatan Bekalan Air, Kementerian Tenaga, Teknologi Hijau dan Air Malaysia*



## Raising of Sungai Tinggi Dam, Selangor

**Services:** Feasibility Study, Detailed Engineering Design, Site Supervision

**Client:** *Asia Baru Construction Sdn Bhd*



## Teriang Dam, Negeri Sembilan

**Services:** Technical study, Detailed EIA, Environmental Management Plan, Detailed Engineering Design, Tender, Construction Supervision

**Client:** *Jabatan Bekalan Air, Kementerian Tenaga, Teknologi Hijau dan Air Malaysia*



## Betotan Dam for Sandakan Water Supply Phase 2

**Services:** Preliminary and Detailed Engineering Design, Tender Document, HOS, Construction Supervision

**Client:** *City Best Corporation Sdn Bhd*



## Milau Dam for Kudat Water Supply

**Services:** Study, Engineering Design, Construction Supervision

**Client:** *Campo Sdn Bhd*



## Jus Dam, Melaka

**Services:** Environmental impact assessment study, preliminary and detailed engineering design, construction supervision

**Client:** *Perbadanan Air Melaka*



## Sungai Selangor Water Supply Scheme Phase 3 - Sungai Selangor Dam

**Services:** Feasibility study, EIA Study, Detailed Engineering Design, Construction Supervision

**Client:** *Gamuda Berhad*



## Dam Safety Review for 2017 of ORS Sg. Labu

**Services:** Dam Safety Inspection

**Client:** *Konsortium Air Selangor Sdn Bhd*



## Cameron Highlands and Batang Padang Dam Safety Review

**Services:** Dam Inspection and Safety Review

**Client:** *Tenaga Nasional Berhad*



## Gerugu Dam, Sarikei, Sarawak

**Services:** Engineering Design and Construction Supervision

**Client:** *PPES Works (Sarawak) Sdn Bhd*



## Kenyir Dam Safety Review, Terengganu

**Services:** Dam Safety Review, Dam Safety Inspection and Training

**Client:** *Tenaga Nasional Berhad*

# Water Supply / Resources & Treatment



## RAPID Raw Water Treatment, Pengerang, Johor

**Services:** Basic, Detailed Design and Construction Supervision

**Client:** *Loh & Loh & WET JV*



## Provision of Project Management Consultant Services (PMC) for Raw Water Supply to RAPID (PAMER), Pengerang, Johor

**Services:** PMC, Study and Preliminary Engineering Design, Site Investigation, Detailed EIA, Detailed Engineering Design, and Construction Supervision

**Client:** *Petroleum Nasional Berhad Refinery and Petrochemicals Integrated Development (RAPID)*



## Projek Pembinaan Barrage Sungai Johor Di Daerah Kota Tinggi, Johor

**Services:** Feasibility Study, Environmental Study, Engineering Design and Tender Documentation, Construction Supervision

**Client:** *Jabatan Bekalan Air, Kementerian Tenaga, Teknologi Hijau dan Air Malaysia*



## Alternative Water Supply to KLIA - Labu Water Treatment Plant and Associated Works, Selangor

**Services:** Feasibility study, Detailed Design, Project Management Consultancy, Construction Supervision

**Client:** *Pengurusan Aset Air Berhad*

# Water Supply / Resources & Treatment



## Langat 2 Water Supply Scheme Phase 1, Selangor

**Services:** Concept design, Detailed Design, Project Management Consultancy, EIA / Monitoring Programme, Construction Supervision

**Client:** *Pengurusan Aset Air Berhad*



## Beaufort Water Supply Phase 2 and Submarine Pipeline from Water Treatment Plant to Labuan Island

**Services:** Concept Design, Detailed Design and Construction Supervision

**Client:** *Kementerian Tenaga, Teknologi Hijau dan Air Malaysia*



## Pahang-Selangor Raw Water Transfer Project

**Services:** Detailed Design of Dam, Intakes for Water Supply Project, Environmental Impact Assessments / Monitoring Programme

**Client:** *Jabatan Bekalan Air, Kementerian Tenaga, Teknologi Hijau dan Air Malaysia*



## Klang Trunk Distribution, Selangor

**Services:** Concept Design, Detailed Design and Construction Supervision

**Client:** *Syarikat Bekalan Air Selangor*





## Bertam-Kepala Batas Flood Mitigation and Drainage Project, Pulau Pinang

**Services:** Hydrological and hydraulic studies, detailed design and construction supervision of pumped drainage and river improvement design

**Client:** *Jabatan Pengairan dan Saliran, Malaysia*



## Pangkor Island Drainage Master Plan, Perak

**Services:** Preparation of Integrated Drainage and Storm Water Management Master Plan

**Client:** *Jabatan Pengairan dan Saliran, Perak*



## Irrigation Infrastructure for the Development of Granary Area at Paloh Island, Sarikei, Sarawak

**Services:** Feasibility Study, Detailed Design and Construction Supervision

**Client:** *Jabatan Pengairan dan Saliran, Sarawak*



## Irrigation Master Plan for Putrajaya

**Services:** Preparation of Integrated Irrigation Master Plan

**Client:** *Perbadanan Putrajaya*



## Northwest Selangor Integrated Agricultural Development Project, Selangor

**Services:** Study, Detailed Design and Head Office Support during Construction

**Client:** *Jabatan Pengairan dan Saliran, Malaysia*



## Scour at Sungai Langat and Sungai Semenyih Substructure

**Services:** Hydrological & Hydraulic Modeling, Geotechnical & foundation studies and Structural Analysis

**Client:** *PLUS Berhad*



## Drainage Masterplan Study, Simpang Renggam Town

**Services:** Drainage Master Plan

**Client:** *Drainage and Irrigation Department, Johor*



## Kerteh and Kemasik Town Drainage Systems Masterplan, Terengganu

**Services:** Drainage studies and Development of drainage systems Masterplan

**Client:** *State Economic Planning Unit, Government of Terengganu*



## Cadangan Pembinaan Centralised Sewage Treatment Plant (STP) dan Penyambungan Rangkaian Paip Pembetungan di Kawasan Tadahan Lembangan Sungai Langat Secara Reka dan Bina

**Services:** Detailed Engineering Design, Construction Supervision, EIA Study, Planning Submission and Approval

**Client:** *MMC Pembetungan Langat Sdn Bhd*



## Pantai 2 Sewage Treatment Plant, Kuala Lumpur

**Services:** Review of M&E, Process Design, Construction Supervision

**Client:** *BEWG (M) Sdn Bhd*



## Sewage Treatment Plant and Centralised Sludge Treatment Facility, Port Dickson, Negeri Sembilan

**Services:** Detailed design, construction supervision

**Client:** *Jabatan Perkhidmatan Pembetungan Kementerian Perumahan & Kerajaan Tempatan*



## Technical Consultancy to Optimise Bio-gas & Bio-fertilizer Yield by Introducing Co-digestion in Existing Anaerobic Digestion Tank at IWK Bonus STP at Titiwangsa, Kuala Lumpur

**Services:** Feasibility study, demonstration plant

**Client:** *Malakoff R&D Sdn Bhd*



## Cadangan Pembinaan Centralised Sewage Treatment Plant (STP) dan Penyambungan Rangkaian Paip Pembetungan di Kawasan Tadahan Lembangan Sungai Langat Secara Reka dan Bina

**Services:** Preliminary Environmental Impact Assessment

**Client:** *MMC Pembetungan Langat Sdn Bhd*



## Proposed Seluyut Dam and Water Supply to Pengerang Integrated Petrochemical Complex

**Services:** Environmental Impact Assessment and Environmental Management plan

**Client:** *Petroliaam Nasional Berhad Refinery and Petrochemicals Integrated Development (RAPID)*



## Projek Pembinaan Barrage Sungai Johor Di Daerah Kota Tinggi, Johor

**Services:** Feasibility Study, Environmental Study, Engineering Design and Tender Documentation, Construction supervision

**Client:** *Jabatan Bekalan Air, Kementerian Tenaga, Teknologi Hijau dan Air Malaysia*



## Alternative Water Supply to KLIA – Sg. Labu Off-river Storage and Associated Works

**Services:** Environmental Management Plan and Environmental Monitoring and Audit

**Client:** *Jabatan Bekalan Air  
 Kementerian Tenaga, Teknologi Hijau dan Air Malaysia*



## Teriang Water Supply, Negeri Sembilan

**Services:** Detailed Environmental Impact Assessment  
Environmental Management Plan,  
Environmental Monitoring and Audit

**Client:** *Syarikat Air Negeri Sembilan Sdn. Bhd.*



## Langat 2 Water Supply Scheme Phase 1, Selangor

**Services:** Preliminary Environmental Impact  
Assessment, Environmental Management Plan and  
Environmental Monitoring and Audit

**Client:** *Pengurusan Aset Air Berhad*



## Pahang-Selangor Raw Water Transfer Project

**Services:** Review of Environmental Impact Assessment  
and Environmental Monitoring and Audit

**Client:** *Jabatan Bekalan Air  
Kementerian Tenaga, Teknologi Hijau dan Air Malaysia*



## Environmental Monitoring for Malaysian Integrated Scheduled Waste Management Centre, Negeri Sembilan

**Services:** Environmental Impact Assessment and  
Environmental Monitoring and Audit

**Client:** *Kualiti Alam Sdn Bhd*



**Kajang Utama Project, Selangor**

**Services:** 3D Modelling & Clash Detection

**Client:** *MRCB Utama Sdn Bhd*



**Kia Peng, Condominium, Kuala Lumpur**

**Services:** 3D Modelling & Clash Detection

**Client:** *One Sentral Park Sdn Bhd*



**UDA Tower A, Corporate Office & Retail, Kuala Lumpur**

**Services:** 3D Modelling, Clash Detection & As-Built Model

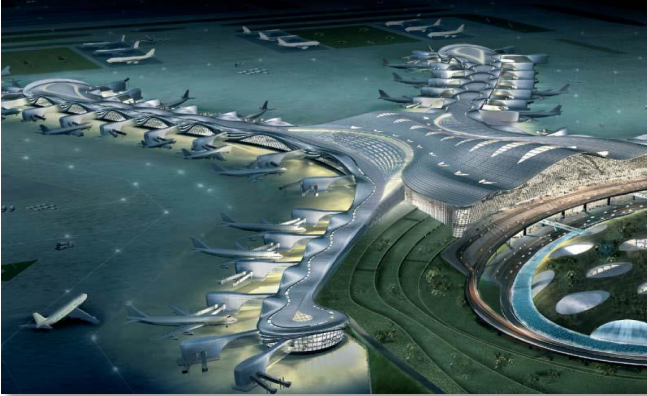
**Client:** *UDA Holdings Bhd*



**Banyan Tree Signature Project, Kuala Lumpur**

**Services:** 3D Modelling, Clash Detection, Quantity Take-off, Construction Simulation & As-Built Model

**Client:** *BUCG (M) Sdn Bhd*



**Abu Dhabi International Airport, UAE**

**Services:** 3D Modelling & Clash Detection

**Client:** *Abu Dhabi International Airport*



**International Convention Center, Saudi Arabia**

**Services:** 3D Modelling

**Client:** *Al Muhaidib Contracting Co*



**Louvre Museum, UAE**

**Services:** 3D Modelling, Clash Detection & Extraction of Shop drawing from BIM Model

**Client:** *Omnix International*



**Parkview, India**

**Services:** 3D Modelling, Clash Detection, Bill of Quantities

**Client:** *Prestige Group*



## Project Management Services for 5,500 units Housing, Brunei

**Services:** Project Management Consultancy Services

**Client:** *Brunei Economic Development Board*



## Colachel Port Development, India

**Services:** Feasibility study

**Client:** *Construction Industry Development Board Malaysia (CIDB)*



## Kang Keng Airport, Cambodia

**Services:** Preliminary and Detailed Design

**Client:** *Ariston Sdn Bhd*



## Hanoi Monorail, Vietnam

**Services:** Feasibility Study

**Client:** *SCOMI Group Berhad*





**Madinat Al-Arab, Dubai**

**Services:** Planning & Preliminary Design

**Client:** *TAK Design Consultants Sdn Bhd*



**Techno Park Development, Dubai**

**Services:** Detailed Design and Construction Supervision

**Client:** *Techno Park Management*



**Nad Al Sheba Development, Dubai**

**Services:** Detailed Design Services

**Client:** *TAK Design Consultants Sdn Bhd*



**Al Abdally Farm, Kuwait**

**Services:** Design and Construction Management

**Client:** *Ministry of Public Works Kuwait*



**ENGINEERS**

B1 (1-4) Block B Plaza Dwitasik  
No 21, Jalan 5/106, Bandar Sri Permaisuri,  
56100 Kuala Lumpur. Malaysia  
Tel : 603-91730355 Fax : 603-91730939  
E-mail : heb@hss.com.my

[www.hssgroup.com.my](http://www.hssgroup.com.my)